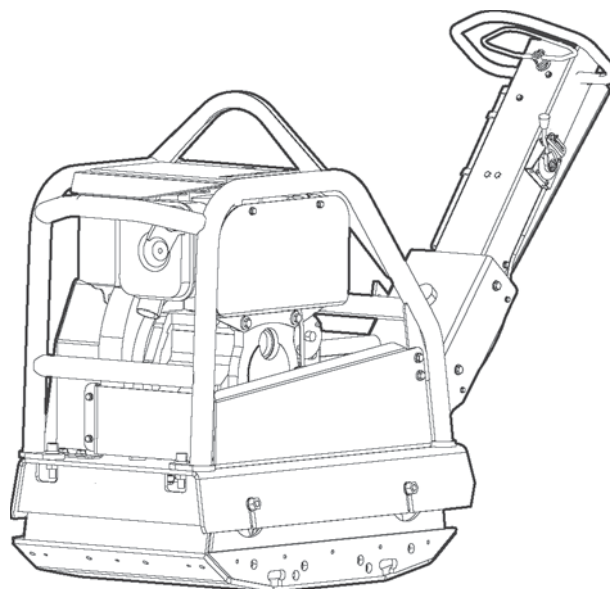


Spare parts list

Forward and reversible plate

	Valid from serial number
LG 500 Hatz Manual start 550 mm	BGF045788
LG 500 Hatz Electric start 550 mm	BGF045788
LG 500 Hatz Manual start 550 mm Bio	BGF045788
LG 500 Hatz Electric start 550 mm Bio	BGF045788
LG 500 Hatz Electric start 700 mm	BGF045788
LG 500 Hatz Electric start 700 mm Bio	BGF045788
LG 500 Hatz Electric start 750 mm	BGF045788
LG 500 Hatz Manual start 750 mm	BGF045788
LG 500 Hatz Manual start 750 mm Bio	BGF045788
LG 500 Hatz Electric start 750 mm Bio	BGF045788
LG 500 Hatz Electric start 850 mm	BGF045788
LG 500 Hatz Electric start 550 mm EPA	BGF045788
LG 500 Hatz Electric start 750 mm EPA	BGF045788
LG 500 Hatz Electric start 850 mm EPA	BGF045788
LG 500 Hatz Electric start 550 mm CI	BGF045788
LG 500 Hatz Electric start 700 mm CI	BGF045788
LG 500 Hatz Electric start 850 mm CI	BGF045788



General information

This spare parts list applies to the following:

Part number	Description
3382 0000 54	Forward and reversing plate LG 500 Hatz Manual start 550 mm (21.65 in.)
3382 0000 55	Forward and reversing plate LG 500 Hatz Electric start 550 mm (21.65 in.)
3382 0000 58	Forward and reversing plate LG 500 Hatz Manual start 550 mm (21.65 in.) Bio
3382 0000 59	Forward and reversing plate LG 500 Hatz Electric start 550 mm (21.65 in.) Bio
3382 0000 63	Forward and reversing plate LG 500 Hatz Electric start 700 mm (27.56 in.) (550 mm plus 2 x 75 mm / 21.65 in. plus 2 x 2.95 in.)
3382 0000 64	Forward and reversing plate LG 500 Hatz Electric start 700 mm (27.56 in.) Bio (550 mm plus 2 x 75 mm / 21.65 in. plus 2 x 2.95 in.)
3382 0000 56	Forward and reversing plate LG 500 Hatz Electric start 750 mm (29.50 in.)
3382 0000 57	Forward and reversing plate LG 500 Hatz Manual start 750 mm (29.50 in.)
3382 0000 60	Forward and reversing plate LG 500 Hatz Manual start 750 mm (29.50 in.) Bio
3382 0000 61	Forward and reversing plate LG 500 Hatz Electric start 750 mm (29.50 in.) Bio
3382 0000 62	Forward and reversing plate LG 500 Hatz Electric start 850 mm (35.50 in.) (550 mm plus 2 x 150 mm / 21.65 in. plus 2 x 5.91 in.)
3382 0003 24	Forward and reversing plate LG 500 Hatz Electric start 550 mm (21.65 in.) EPA
3382 0002 86	Forward and reversing plate LG 500 Hatz Electric start 750 mm (29.50 in.) EPA
3382 0003 16	Forward and reversing plate LG 500 Hatz Electric start 850 mm (35.50 in.) EPA (550 mm plus 2 x 150 mm / 21.65 in. plus 2 x 5.91 in.)
3382 0003 44	Forward and reversing plate LG 500 Hatz Electric start 550 mm (21.65 in.) CI
3382 0003 45	Forward and reversing plate LG 500 Hatz Electric start 700 mm (27.56 in.) (550 mm plus 2 x 75 mm / 21.65 in. plus 2 x 2.95 in.) CI
3382 0003 46	Forward and reversing plate LG 500 Hatz Electric start 850 mm (35.50 in.) (550 mm plus 2 x 150 mm / 21.65 in. plus 2 x 5.91 in.) CI

Use only authorized parts. Any damage or malfunction caused by the use of unauthorized parts is not covered by Warranty or Product Liability.
Any unauthorized use or copying of the contents or any part thereof is prohibited. This applies in particular to trademarks, model denominations, part numbers, and drawings.

Instructions for use

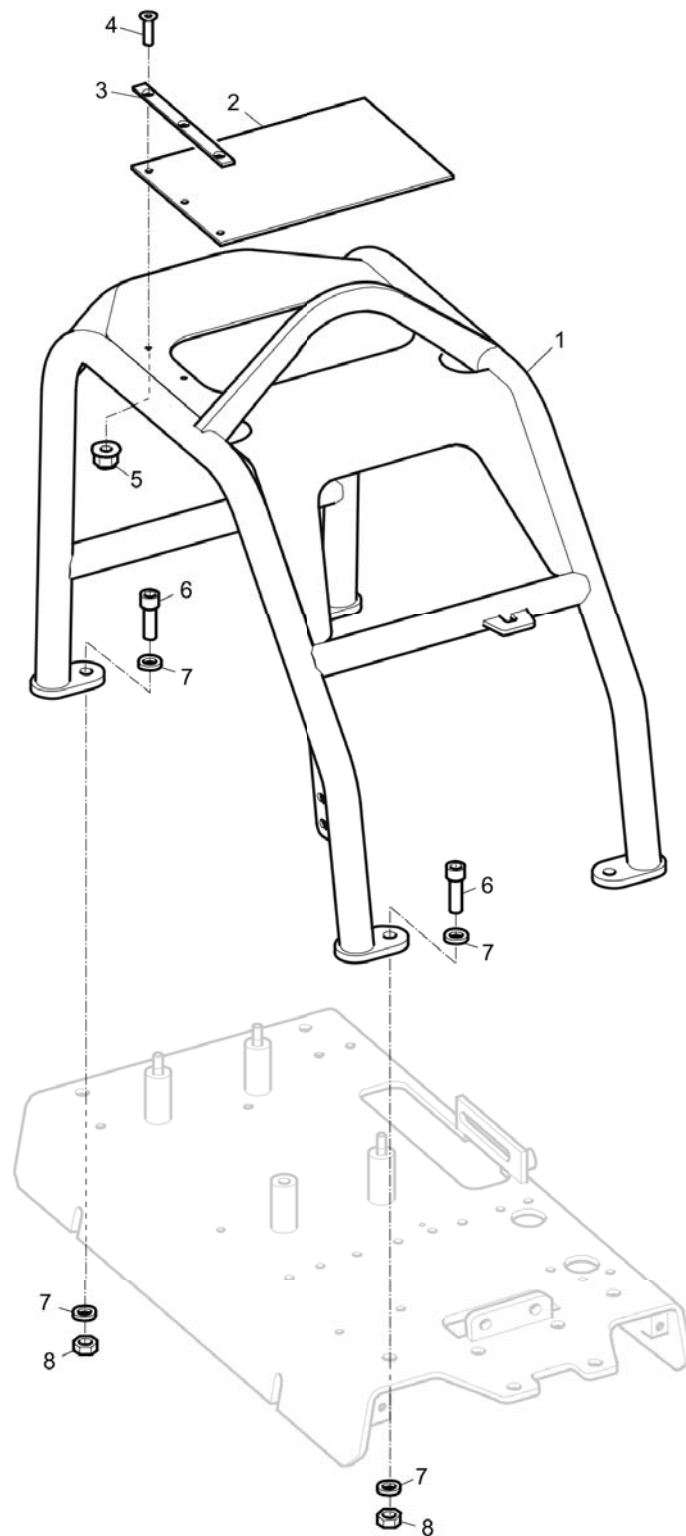
This spare parts list contains no safety regulations and is merely intended to assist in the ordering of spare parts.

For information about operating, servicing, or repairing, the relevant Safety and operating instructions must be consulted at all costs.

Please observe the safety instructions listed in the relevant Safety and operating instructions!

Contents

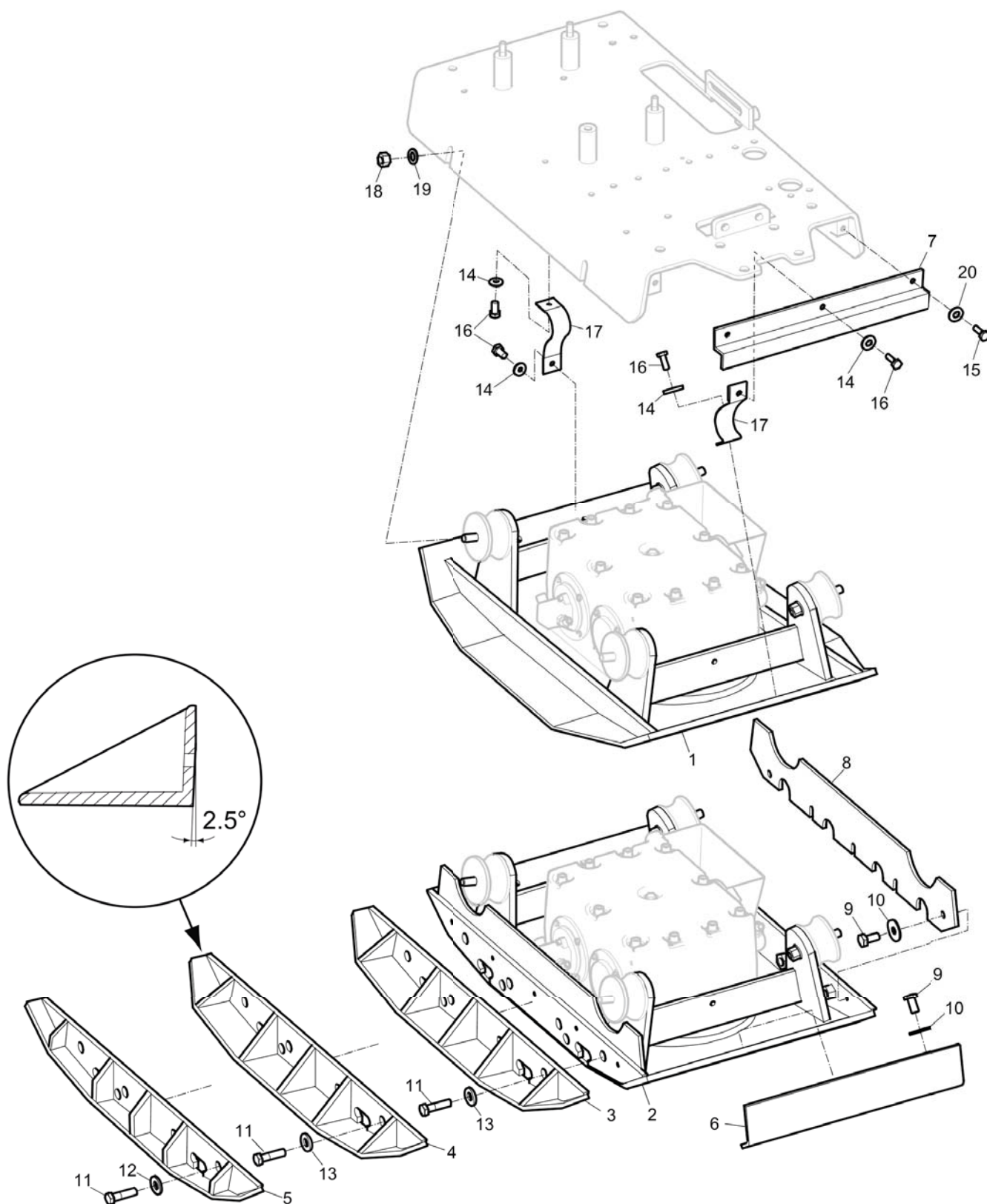
Spare parts list	4
Frame	4
Ground plate and engine plate	6
Ground plate and eccentric element installation	8
Block paving plate 750 mm (29.5 in.)	11
Block paving plate 850 mm (33.5 in.)	15
Eccentric element	19
Engine installation	23
Engine, Hatz 1D81Z electric start	28
Engine, Hatz 1D81Z electric start, EPA version	34
Engine, Hatz 1D81Z manual start	40
Fuel tank Hatz 1D81	46
V-belt cover	48
Centrifugal clutch	50
Belt tightener	52
Hydraulic system	54
Electric equipment	58
Electric equipment, compaction indicator (CI)	61
Battery box installation	64
Handle	66
Non EPA throttle control	68
Throttle control, EPA version	70
Labels	73
Kits	76
One year service kit	76
Shock absorber repair kit	79
Eccentric element repair kit	83
Forward and reverse piston repair kit	87
Block paving plate kit 750 mm (29.5 in.)	91
Block paving plate kit 850 mm (33.5 in.)	94
Extension plate kit 2 x 75 mm (2 x 2.95 in.)	96
Extension plate kit 2 x 150 mm (2 x 5.90 in.)	98
Slanted extension plate kit 2 x 150 mm (2 x 5.90 in.)	100
Hour meter kit	102
Safety crank handle kit	104

Spare parts list Frame

Refer to Parts Online for the most up to date information. The printed information might be outdated.

Fri Mar 28 10:08:59 UTC 2014

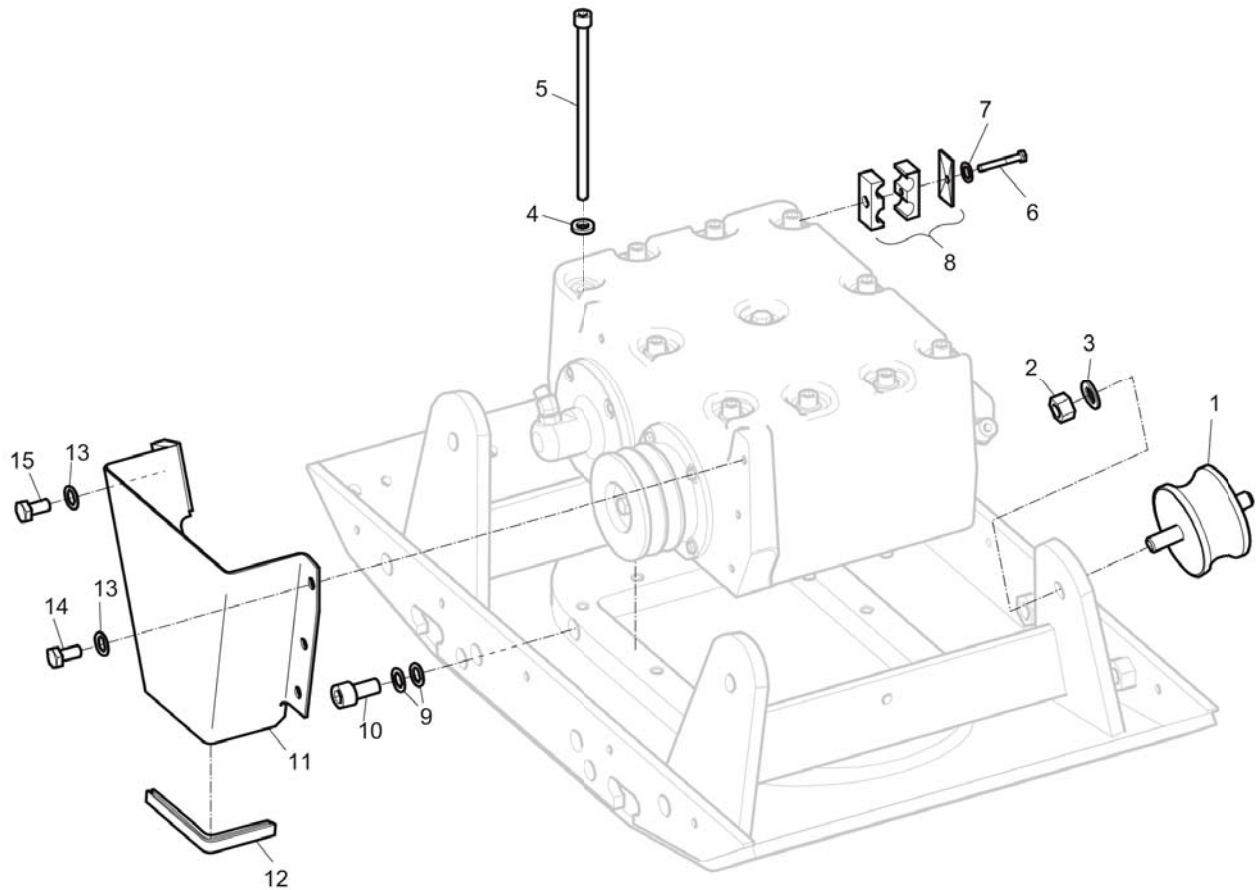
Item	Part Number	Name	Qty	L
1	3382010476	Protective frame	1	
2	4700281485	Cover	1	
3	4700281484	Bracket	1	
4	-	Screw, M8 x 30 mm 8.8 A3K	3	
5	-	Lock nut, M8 x 1.25 mm A2K	3	
6	-	Screw, M16 x 60 mm 8.8 A3K	4	
7	-	Washer, 17 x 30 x 6 mm, 0.70 x 1.18 x 0.24 in. 300 HV	8	
8	-	Lock nut, M16 ISO7040	4	

Spare parts list Ground plate and engine plate

Refer to Parts Online for the most up to date information. The printed information might be outdated.

Fri Mar 28 10:09:04 UTC 2014

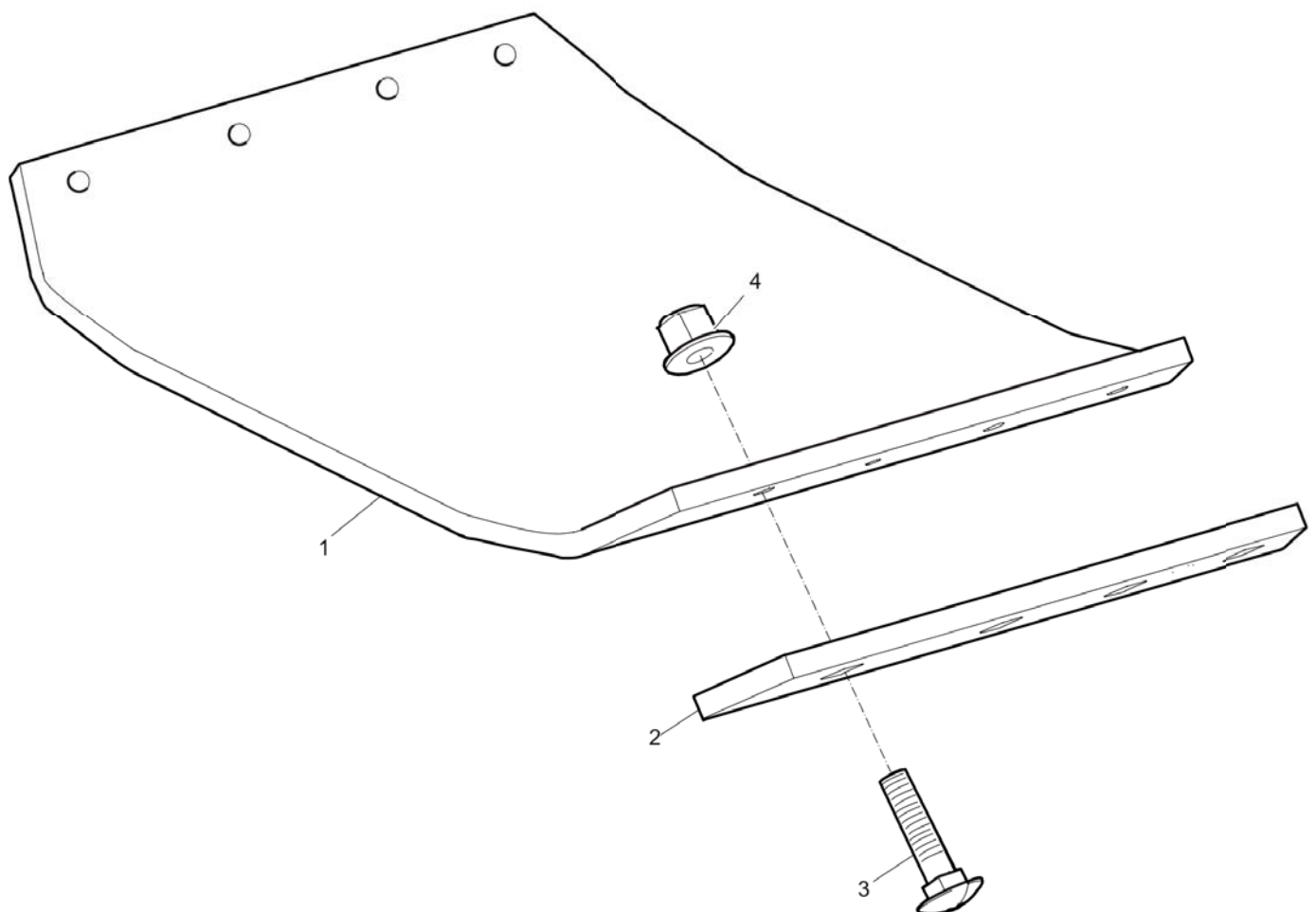
Item	Part Number	Name	Qty	L
1	4700389108	Ground plate, 750 mm, 29.53 in.	1	
2	4700282714	Ground plate, 550 mm, 21.65 in.	1	
3	4700280544	Extension plate, 150 mm, 5.91 in.	2	
4	4700282739	Extension plate, Slanted 2.5°, 150 mm , 5.91 in.	2	
5	4812070677	Extension plate, 75 mm, 2.95 in.	2	
6	4700386349	Plastic cover	2	
7	3382010479	Plate	1	
8	4700282704	Plastic cover	2	
9	-	Screw, M10 x 20 mm 8.8 A3K	13	
10	-	Washer, 10.5 x 30 x 2.5, 0.41 x 1.18 x 0.10 in.	13	
11	-	Screw, M20 x 50 mm	8	
12	-	Washer, 21 x 36 x 6 mm, 0.83 x 1.42 x 0.24 in.	8	
13	4700615047	Conical spring washer	1	
14	-	Washer, 13 x 36 x 6 mm, 0.51 x 1.42 x 0.24 in. 300 HV	5	
15	-	Screw, M12 x 25 mm 8.8 A3K	2	
16	-	Screw, M12 x 20 mm 8.8 A3K	4	
17	3382010021	Strap	2	
18	4700570008	Nut	4	
19	-	Washer, 17 x 30 x 3 mm, 0.70 x 1.18 x 0.12 in. 300 HV	4	
20	-	Washer, 13 x 30 x 4 mm, 0.51 x 1.18 x 0.16 in. 300 HV	2	

Spare parts list Ground plate and eccentric element installation

Item	Part Number	Name	Qty	L
1	4700280454	Shock absorber	4	
2	-	Nut, M16 A3K	4	
3	-	Washer, 17 x 30 x 3 mm, 0.70 x 1.18 x 0.12 in. 300 HV	4	
4	-	Washer, 13 x 30 x 4 mm, 0.51 x 1.18 x 0.16 in. 300 HV	10	
5	4700928944	Screw, M12 x 200 mm 12.9 GEOMET®	10	
6	-	Screw, M8 x 60 mm 8.8 A2K	1	
7	-	Washer, 8.4 x 16 x 1.5 mm, 0.33 x 0.63 x 0.06 in. 300 HV	1	
8	4700383458	Hose holder	1	
9	-	Washer, 10 x 16 x 1 mm, 0.39 x 0.63 x 0.04 in.	2	
10	-	Screw, M10 x 20 mm	1	
11	4700280434	Belt guard	1	
12	-	Edge trim, 165 mm, 6.50 in.	1	
13	-	Washer, 8.4 x 16 x 1.5 mm, 0.33 x 0.63 x 0.06 in. 300 HV	5	
14	-	Screw, M8 x 16 mm 8.8 A3K	3	
15	-	Screw, M8 x 30 mm	2	

Comments for Page: Ground plate and eccentric element installation

GEOMET is a registered trademark of Nof Metal Coatings North America Inc.

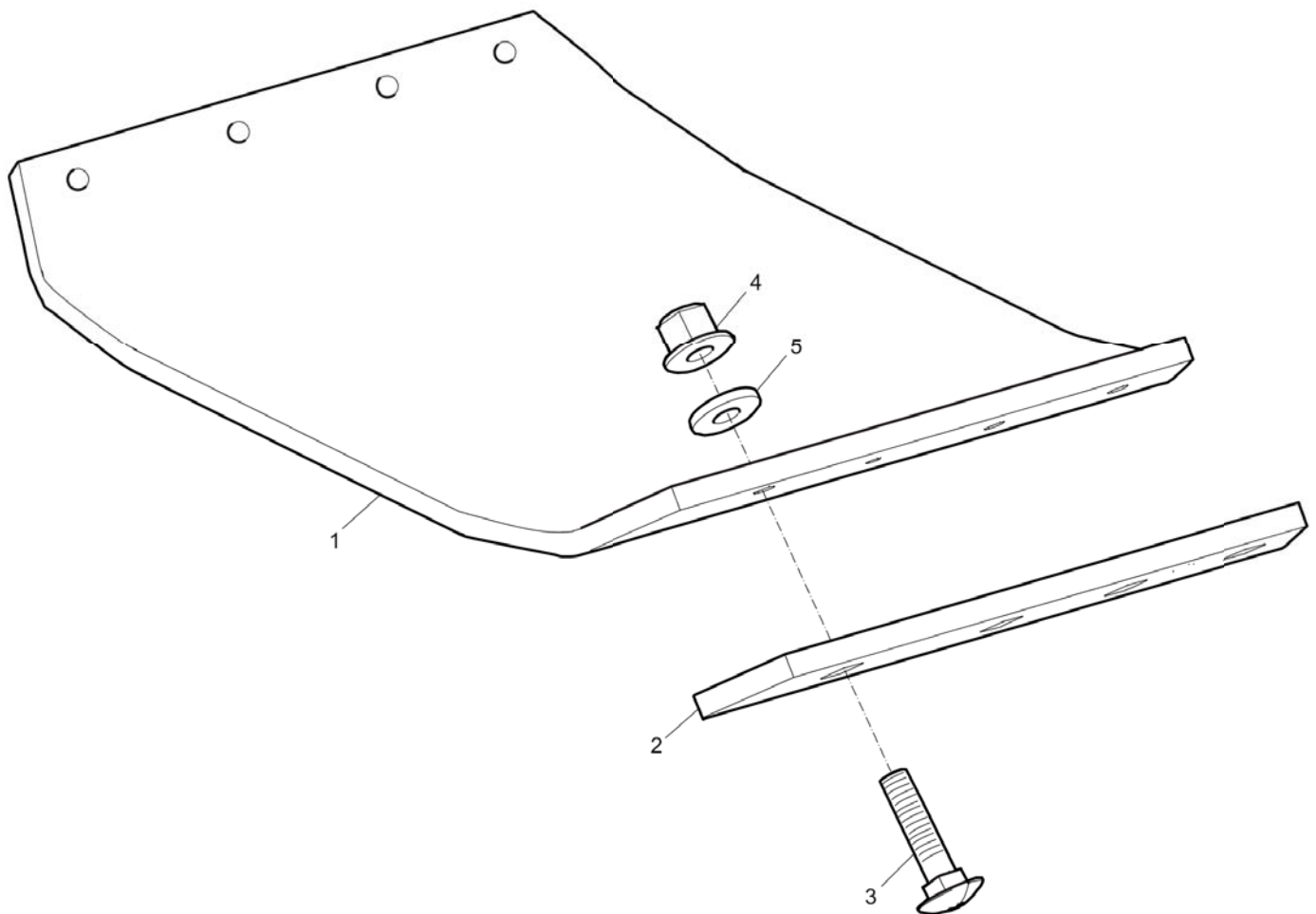
Spare parts list Block paving plate 750 mm (29.5 in.)

Item	Part Number	Name	Qty	L
1	4700280888	Ground plate	1	A
2	4700382008	Bracket	2	
3	-	Screw, M10 x 50 mm 4.6 A3K	8	
4	-	Lock nut, M10 x 1.5 mm A3K	8	

Comments for Page: Block paving plate 750 mm (29.5 in.)

(L)OCAL REMARKS

A | Polyurethane

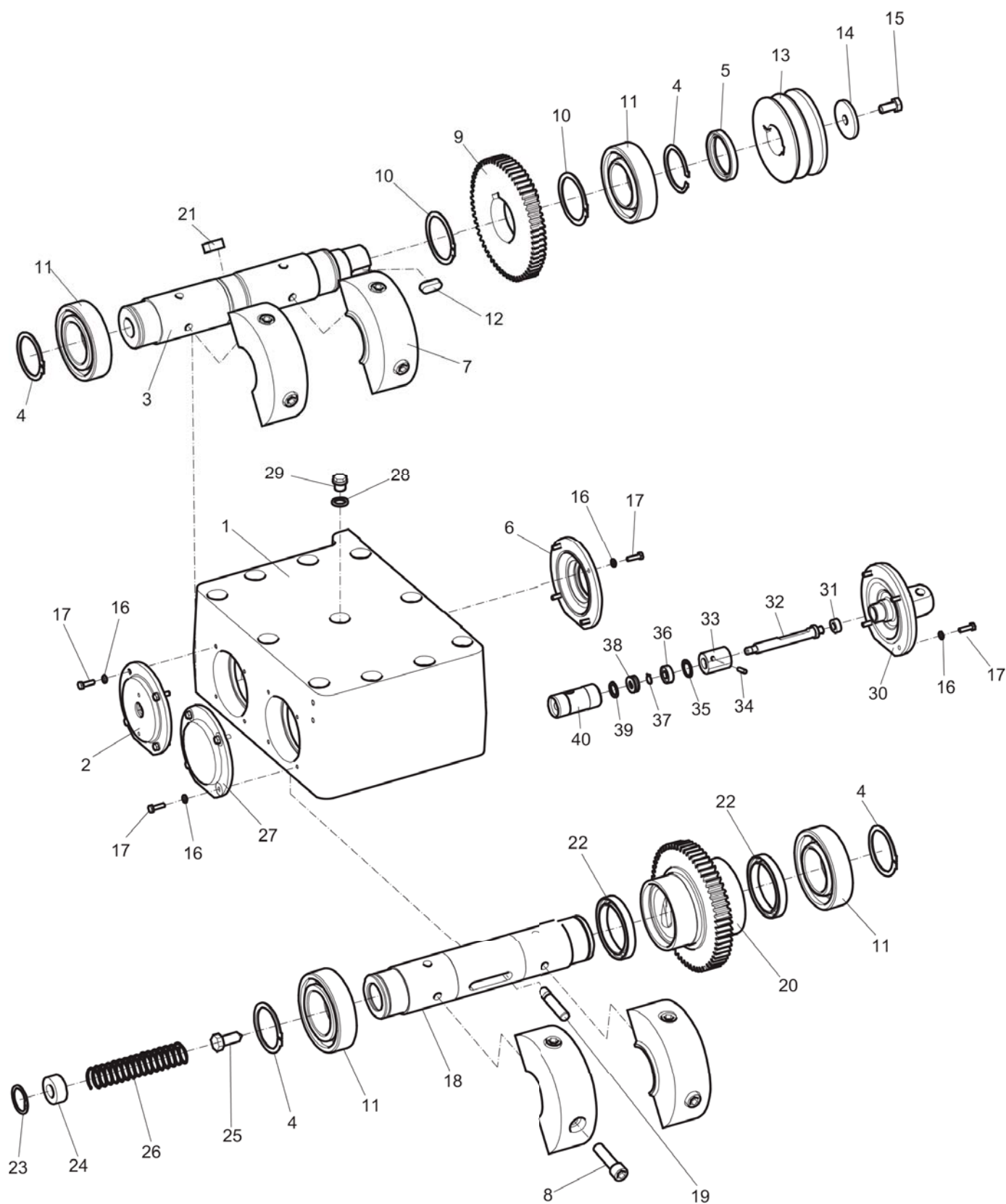
Spare parts list Block paving plate 850 mm (33.5 in.)

Item	Part Number	Name	Qty	L
1	4700381903	Ground plate	1	A
2	4700381902	Bracket	2	
3	-	Screw, M10 x 50 mm 8.8 A3K	8	
4	-	Lock nut, M10	8	
5	-	Washer, 10.5 x 22 x 2 mm, 0.41 x 0.87 x 0.08 in. 300 HV	8	

Comments for Page: Block paving plate 850 mm (33.5 in.)

(L)OCAL REMARKS

A | Polyurethane

Spare parts list Eccentric element

Refer to Parts Online for the most up to date information. The printed information might be outdated.

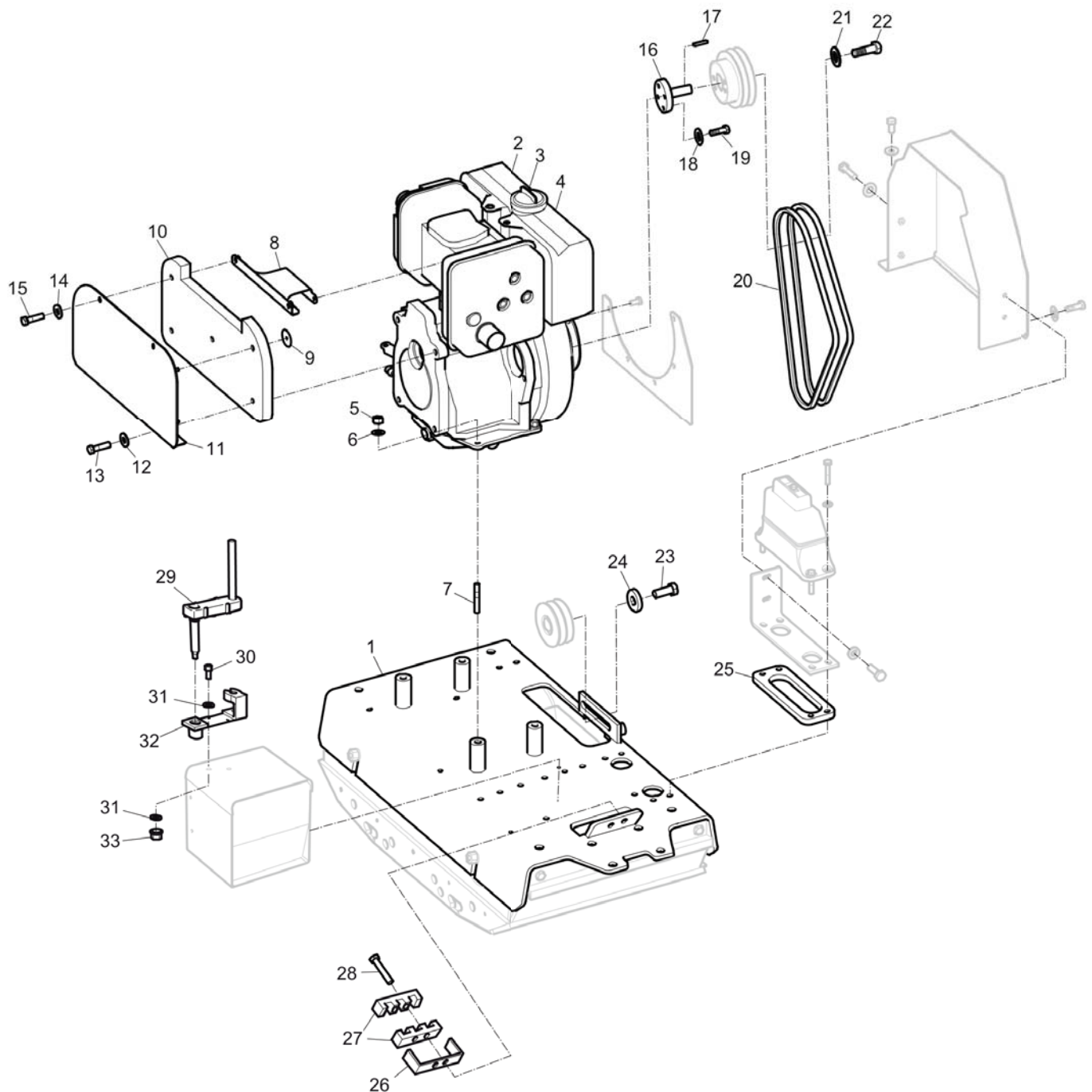
Fri Mar 28 10:09:30 UTC 2014

Item	Part Number	Name	Qty	L
1	4700397520	Eccentric housing	1	
2	4700379079	Cover	1	
3	4700377986	Shaft	1	
4	4700150033	Retaining ring	4	
5	4700928794	Radial lip-type seal	1	
6	4700379080	Cover	1	
7	4700397522	Eccentric weight	4	
8	-	Screw, M12 x 45 mm 8.8 A3K	8	
9	4700378216	Gear	1	
10	4700150020	Snap ring	2	
11	4700928786	Ball bearing	4	
12	4700928788	Key	1	
13	4700377776	Pulley	1	
14	4700280432	Washer	1	
15	-	Screw, M10 x 20 mm 8.8 A3K	1	
16	-	Washer, 6.4 x 12 x 1.5 mm, 0.25 x 0.47 x 0.06 in. 300 HV	16	
17	-	Screw, M6 x 20 mm 8.8 A2K	16	
18	4812070073	Eccentric weight	1	
19	4700280442	Pin	1	
20	4812070093	Reverser	1	
21	4700280450	Key	1	
22	4700928796	Ball bearing	2	
23	4700928787	Retaining ring	1	
24	4700280448	Stop	1	
25	4700280449	Stop screw	1	
26	4700928798	Spring	1	
27	4700379081	Cover	1	
28	-	Washer, 16.7 x 24 x 1.5 mm Type A M16 , 0.66 x 4.88 x 0.06 in.	1	
29	4700232143	Plug	1	
30	4812070042	Hydraulic cylinder	1	
31	4700281276	Sealing ring	1	
32	4812070044	Piston rod	1	

Refer to Parts Online for the most up to date information. The printed information might be outdated.

Fri Mar 28 10:09:48 UTC 2014

Item	Part Number	Name	Qty	L
33	4812070043	Cap	1	
34	4700629062	Spring pin	1	
35	4700151039	Retaining ring	1	
36	4812070359	Ball bearing	1	
37	4700150002	Retaining ring	1	
38	4812070362	Thrust ball bearing	1	
39	4812070363	Spring washer	1	
40	4812070052	Piston	1	

Spare parts list Engine installation

Refer to Parts Online for the most up to date information. The printed information might be outdated.

Fri Mar 28 10:09:49 UTC 2014

Item	Part Number	Name	Qty	L
1	3382010475	Engine plate	1	
2	4700395243	Engine, complete, Hatz 1D81Z, electric start	1	
3	3382012257	Engine, complete, Hatz 1D81Z electric start, EPA-version	1	A
4	4700395242	Engine, complete, Hatz 1D81Z manual start	1	
5	-	Nut, M12	4	
6	-	Washer, 13 x 24 x 6 mm, 0.51 x 0.95 x 0.16 in. 300 HV	4	
7	4700394700	Stud	4	
8	4700386369	Bracket	1	
9	4700373476	Insulating washer	5	
10	4700386393	Insulation	1	
11	4700386313	Cover	1	
12	-	Washer, 13 x 30 x 4 mm, 0.51 x 1.18 x 0.16 in. 300 HV	2	
13	-	Screw, M12 x 45 mm 8.8 A3K	2	
14	-	Washer, 8.4 x 16 x 3 mm, 0.33 x 0.63 x 0.12 in. 300 HV	2	
15	-	Screw, M8 x 25 mm 8.8 A2K	2	
16	4700281194	Engine shaft	1	
17	4700350036	Key	1	
18	-	Washer, 8.4 x 16 x 3 mm, 0.33 x 0.63 x 0.12 in. 300 HV	4	
19	-	Screw, M8 x 30 mm	4	
20	4700386312	V-belt	2	
21	-	Washer, 13 x 30 x 4 mm, 0.51 x 1.18 x 0.16 in. 300 HV	2	
22	-	Screw, M10 x 20 mm 8.8 A3K	1	
23	-	Screw, M12 x 25 mm 8.8 A3K	1	
24	-	Washer, 13 x 36 x 6 mm, 0.51 x 1.42 x 0.24 in. 300 HV	1	
25	4700394230	Spacer	1	
26	3382010182	Bracket	1	
27	4700280534	Rubber block	1	
28	-	Screw, M8 x 60 mm 8.8 A2K	2	
29	4700239382	Safety crank	1	

Refer to Parts Online for the most up to date information. The printed information might be outdated.

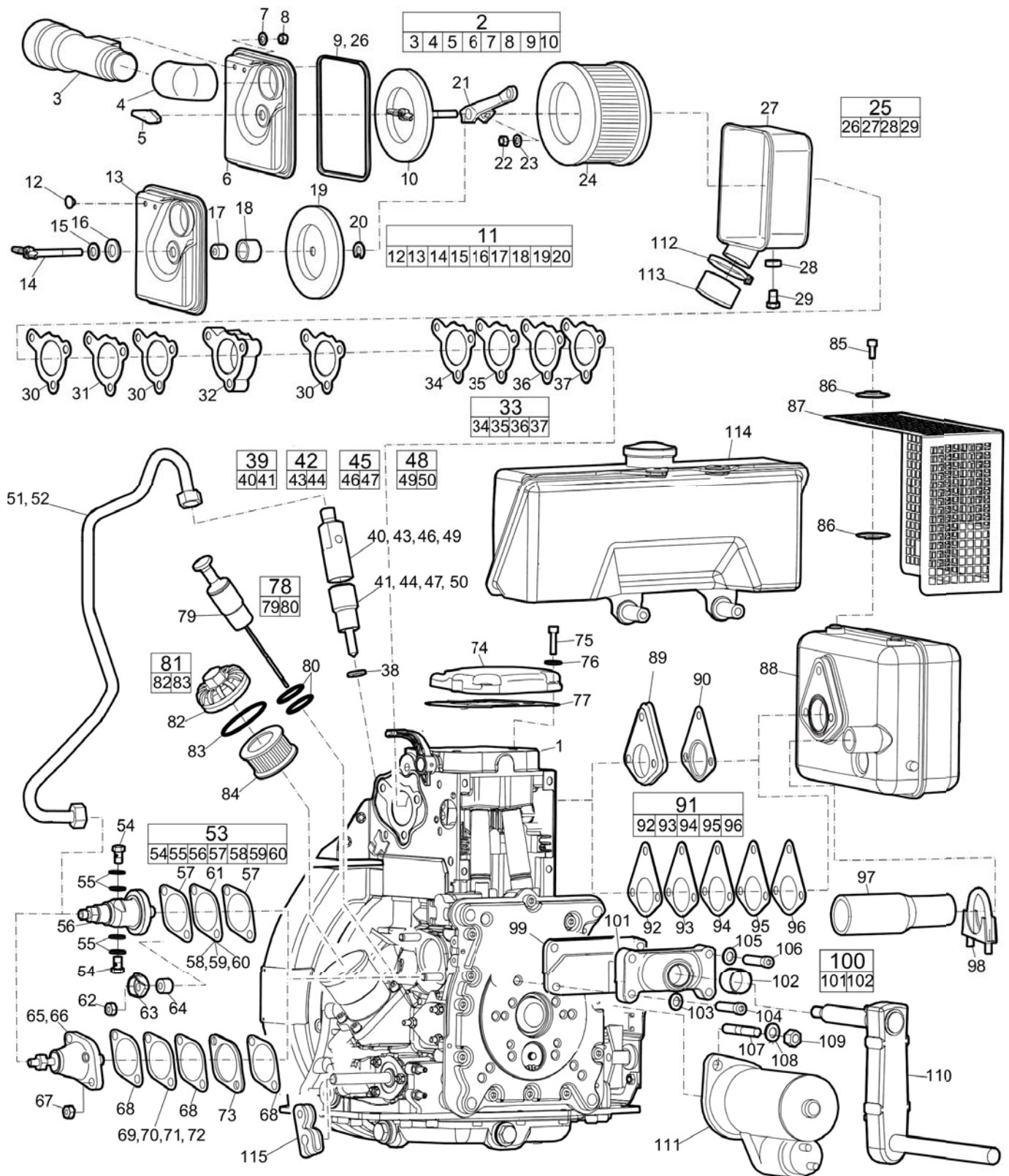
Fri Mar 28 10:10:04 UTC 2014

Item	Part Number	Name	Qty	L
30	-	Screw, M8 x 20 mm 8.8 A2K	2	
31	-	Washer, 8.4 x 16 x 1.5 mm, 0.33 x 0.63 x 0.06 in. 300 HV	4	
32	4700281183	Crank holder	1	
33	-	Nut, M8	2	

Comments for Page: Engine installation

(L)OCAL REMARKS

A | EPA version, for US and Canada market.

Spare parts list Engine, Hatz 1D81Z electric start

Refer to Parts Online for the most up to date information. The printed information might be outdated.

Fri Mar 28 10:10:06 UTC 2014

Item	Part Number	Name	Qty	L
1	4700395243	Engine, complete, Hatz 1D81Z, electric start	1	A
2	3382100249	Air filter cover, complete	1	B
.3	4700239883	Cyclone	1	
.4	4700239882	Rubber elbow	1	
.5	4700937017	Wing nut	1	
.6	-	Cover	1	
.7	-	Washer, M6	2	
.8	-	Nut, M6	2	
.9	4700239526	Gasket	1	
.10	3382100235	Holder	1	
11	3382100248	Air filter cover, complete	1	C
.12	4700239532	Plug	2	
.13	-	Cover	1	
.14	4700239531	Wing screw	1	
.15	4700239529	Insulating disc	1	
.16	4700239530	Washer, 36 x 11 x 3 mm, 1.42 x 0.43 x 0.12 in.	1	
.17	4700239525	Sealing ring	1	
.18	4700239524	Bushing	1	
.19	4700239523	Holder	1	
.20	4700239522	Circlip	1	
21	4700239519	Bracket	1	
22	-	Nut, M8	2	
23	-	Washer, M8	2	
24	4700239423	Air filter	1	
25	4700239516	Air filter cover, complete	1	
.26	4700239526	Gasket	1	
.27	-	Housing	1	
.28	4700239533	Joint	1	
.29	4700239534	Drain screw	1	
30	4700937439	Gasket	3	
31	4700937440	Insulating flange	1	
32	4700937443	Spacer	1	

Item	Part Number	Name	Qty	L
33	4700937442	Gasket, complete	1	
.34	-	Gasket	1	
.35	-	Gasket	1	
.36	-	Gasket	1	
.37	-	Gasket	1	
38	3382100247	Gasket	1	
39	3382100237	Injector, complete	1	D
.40	-	Injector part	1	
.41	3382100238	Nozzle	1	
42	4700950146	Injector, complete	1	E
.43	-	Injector part	1	
.44	3382100239	Nozzle	1	
45	4700939234	Injector, complete	1	F
.46	-	Injector part	1	
.47	4700939235	Nozzle	1	
48	4700239913	Injector, complete	1	G
.49	-	Injector part	1	
.50	4700940466	Nozzle	1	
51	3382100240	Fuel pipe	1	H
52	4700940476	Fuel pipe	1	I
53	4700950148	Injector pump, complete	1	J
.54	3382100241	Banjo screw	2	
.55	3382100242	Gasket	4	
.56	-	Pump part	1	
.57	4700939616	Shim, 0.10 mm, 0.004 in.	2	
.58	4700939778	Shim, 0.6 mm, 0.024 in.	1	
.59	4700939777	Shim, 0.9 mm, 0.035 in.	1	
.60	4700939776	Shim, 1.2 mm, 0.047 in.	1	
61	4700939779	Shim, 0.3 mm, 0.012 in.	1	
62	-	Nut, M8	2	
63	4700950257	Holder	2	
64	4700950263	Spacer	2	
65	4700938279	Injection pump	1	K

Refer to Parts Online for the most up to date information. The printed information might be outdated.

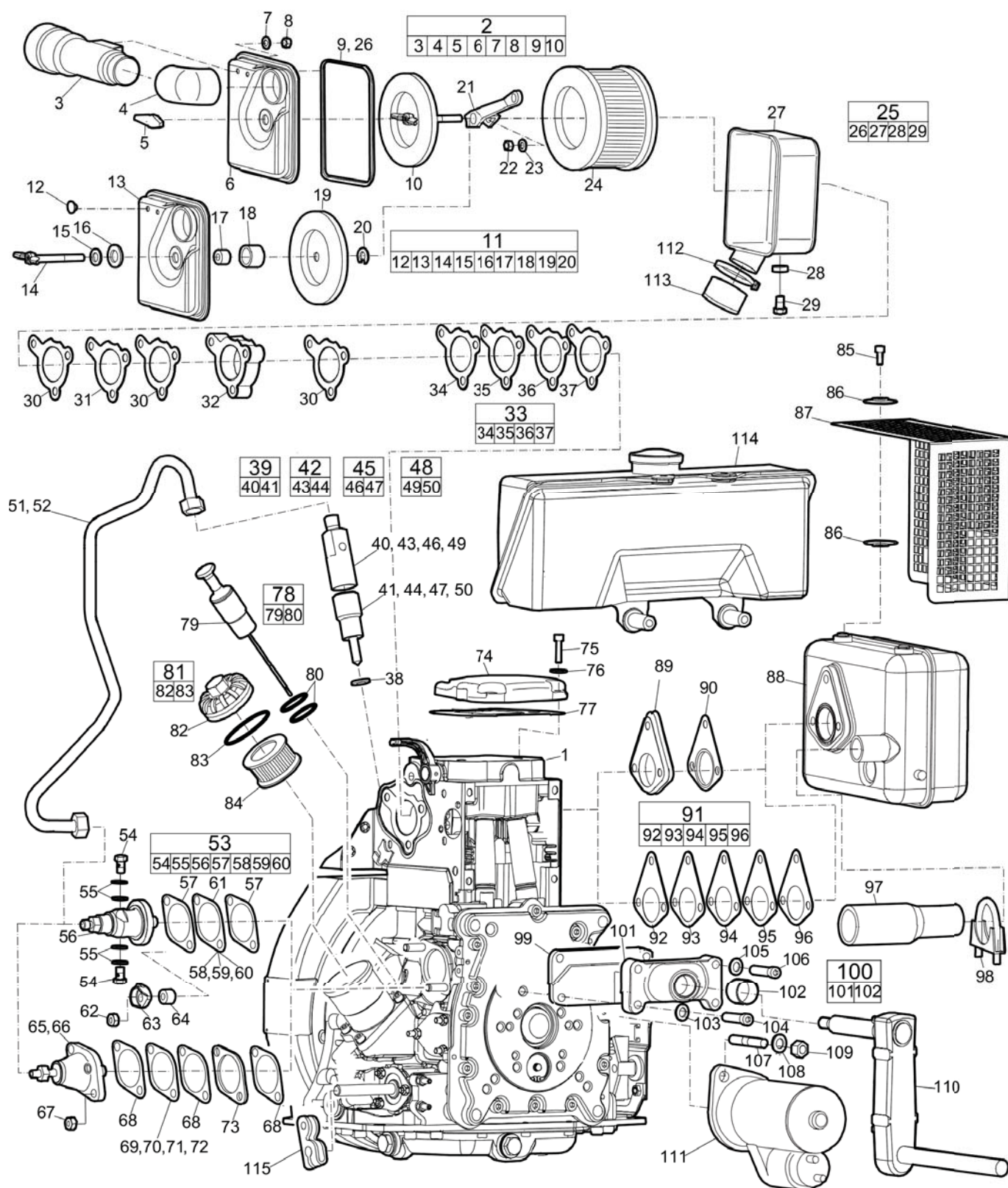
Fri Mar 28 10:10:46 UTC 2014

Item	Part Number	Name	Qty	L
66	4700239912	Injection pump	1	L
67	-	Nut, M8	2	
68	4700939616	Shim, 0.10 mm, 0.004 in.	3	
69	4700939779	Shim, 0.3 mm, 0.012 in.	1	
70	4700939778	Shim, 0.6 mm, 0.024 in.	1	
71	4700939777	Shim, 0.9 mm, 0.035 in.	1	
72	4700939776	Shim, 1.2 mm, 0.047 in.	1	
73	4700939774	Shim, 5.7 mm, 0.224 in.	1	
74	4700939606	Valve cover	1	
75	-	Screw, M6 x 25 mm	4	
76	-	Washer, M6	4	
77	4700239333	Gasket	1	
78	4700239426	Oil dipstick, complete	1	
.79	-	Dipstick	1	
.80	3382100236	O-ring	2	
81	4700935608	Filter cover, complete	1	
.82	-	Cover	1	
.83	4700239335	Gasket	1	
84	4700239326	Oil filter	1	
85	-	Screw, M6 x 12 mm	5	
86	-	Washer, M6	5	
87	4700239428	Cover	1	
88	4700239421	Silencer	1	
89	3382100243	Gasket	1	H
90	3382100244	Gasket	1	H
91	4700937454	Gasket, complete	1	I
.92	-	Gasket	1	
.93	-	Gasket	1	
.94	-	Gasket	1	
.95	-	Gasket	1	
.96	-	Gasket	1	
97	3382100245	Exhaust pipe	1	
98	4700239500	Pipe clamp	1	

Item	Part Number	Name	Qty	L
99	4700935753	Guard	1	
100	4700239386	Crank handle holder, complete	1	
.101	-	Holder	1	
.102	3382100246	Bushing	1	
103	-	Washer, M8	2	
104	-	Screw, M8 x 35 mm	2	
105	-	Washer, M10	2	
106	-	Screw, M10 x 35 mm	2	
107	-	Stud, M12 x 50 mm	2	
108	-	Washer, M12	2	
109	-	Nut, M12	2	
110	4700239392	Safety crank handle	1	
111	4700239501	Starter	1	
112	4700239888	Hose clip	1	
113	4700239885	End cap	1	
114	-	Fuel tank	1	M
115	4700239508	Throttle control lever	1	

Comments for Page: Engine, Hatz 1D81Z electric start

- A | Consist of item 1 to 115.
- B | New version
- C | Old version
- D | Valid from engine serial number 073.25xxxxxxx
- E | Valid for engine serial number 073.24xxxxxxx
- F | Valid from engine serial number 073.20xxxxxxx to 073.23xxxxxxx
- G | Valid up to engine serial number 073.19xxxxxxx
- H | Valid from engine serial number 073.24xxxxxxx
- I | Valid up to engine serial number 073.23xxxxxxx
- J | Valid from engine serial number 073.24xxxxxxx
- K | Valid from engine serial number 073.20xxxxxxx to 073.23xxxxxxx
- L | Valid up to engine serial number 073.19xxxxxxx
- M | See section "Fuel tank".

Spare parts list Engine, Hatz 1D81Z electric start, EPA version

Refer to Parts Online for the most up to date information. The printed information might be outdated.

Fri Mar 28 10:10:49 UTC 2014

Item	Part Number	Name	Qty	L
1	3382012257	Engine, complete, Hatz 1D81Z electric start, EPA-version	1	A
2	3382100249	Air filter cover, complete	1	B
.3	4700239883	Cyclone	1	
.4	4700239882	Rubber elbow	1	
.5	4700937017	Wing nut	1	
.6	-	Cover	1	
.7	-	Washer, M6	2	
.8	-	Nut, M6	2	
.9	4700239526	Gasket	1	
.10	3382100235	Holder	1	
11	3382100248	Air filter cover, complete	1	C
.12	4700239532	Plug	2	
.13	-	Cover	1	
.14	4700239531	Wing screw	1	
.15	4700239529	Insulating disc	1	
.16	4700239530	Washer, 36 x 11 x 3 mm, 1.42 x 0.43 x 0.12 in.	1	
.17	4700239525	Sealing ring	1	
.18	4700239524	Bushing	1	
.19	4700239523	Holder	1	
.20	4700239522	Circlip	1	
21	4700239519	Bracket	1	
22	-	Nut, M8	2	
23	-	Washer, M8	2	
24	4700239423	Air filter	1	
25	4700239516	Air filter cover, complete	1	
.26	4700239526	Gasket	1	
.27	-	Housing	1	
.28	4700239533	Joint	1	
.29	4700239534	Drain screw	1	
30	4700937439	Gasket	3	
31	4700937440	Insulating flange	1	
32	4700937443	Spacer	1	

Item	Part Number	Name	Qty	L
33	4700937442	Gasket, complete	1	
.34	-	Gasket	1	
.35	-	Gasket	1	
.36	-	Gasket	1	
.37	-	Gasket	1	
38	3382100247	Gasket	1	
39	3382100237	Injector, complete	1	D
.40	-	Injector part	1	
.41	3382100238	Nozzle	1	
42	4700950146	Injector, complete	1	E
.43	-	Injector part	1	
.44	3382100239	Nozzle	1	
45	4700939234	Injector, complete	1	F
.46	-	Injector part	1	
.47	4700939235	Nozzle	1	
48	4700239913	Injector, complete	1	G
.49	-	Injector part	1	
.50	4700940466	Nozzle	1	
51	3382100240	Fuel pipe	1	H
52	4700940476	Fuel pipe	1	I
53	4700950148	Injector pump, complete	1	J
.54	3382100241	Banjo screw	2	
.55	3382100242	Gasket	4	
.56	-	Pump part	1	
.57	4700939616	Shim, 0.10 mm, 0.004 in.	2	
.58	4700939778	Shim, 0.6 mm, 0.024 in.	1	
.59	4700939777	Shim, 0.9 mm, 0.035 in.	1	
.60	4700939776	Shim, 1.2 mm, 0.047 in.	1	
61	4700939779	Shim, 0.3 mm, 0.012 in.	1	
62	-	Nut, M8	2	
63	4700950257	Holder	2	
64	4700950263	Spacer	2	
65	4700938279	Injection pump	1	K

Refer to Parts Online for the most up to date information. The printed information might be outdated.

Fri Mar 28 10:10:59 UTC 2014

Item	Part Number	Name	Qty	L
66	4700239912	Injection pump	1	L
67	-	Nut, M8	2	
68	4700939616	Shim, 0.10 mm, 0.004 in.	3	
69	4700939779	Shim, 0.3 mm, 0.012 in.	1	
70	4700939778	Shim, 0.6 mm, 0.024 in.	1	
71	4700939777	Shim, 0.9 mm, 0.035 in.	1	
72	4700939776	Shim, 1.2 mm, 0.047 in.	1	
73	4700939774	Shim, 5.7 mm, 0.224 in.	1	
74	4700939606	Valve cover	1	
75	-	Screw, M6 x 25 mm	4	
76	-	Washer, M6	4	
77	4700239333	Gasket	1	
78	4700239426	Oil dipstick, complete	1	
.79	-	Dipstick	1	
.80	3382100236	O-ring	2	
81(82-83)	4700935608	Filter cover, complete	1	
82	-	Cover	1	
83	4700239335	Gasket	1	
84	4700239326	Oil filter	1	
85	-	Screw, M6 x 12 mm	5	
86	-	Washer, M6	5	
87	4700239428	Cover	1	
88	4700239421	Silencer	1	
89	3382100243	Gasket	1	H
90	3382100244	Gasket	1	H
91	4700937454	Gasket, complete	1	I
.92	-	Gasket	1	
.93	-	Gasket	1	
.94	-	Gasket	1	
.95	-	Gasket	1	
.96	-	Gasket	1	
97	3382100245	Exhaust pipe	1	
98	4700239500	Pipe clamp	1	

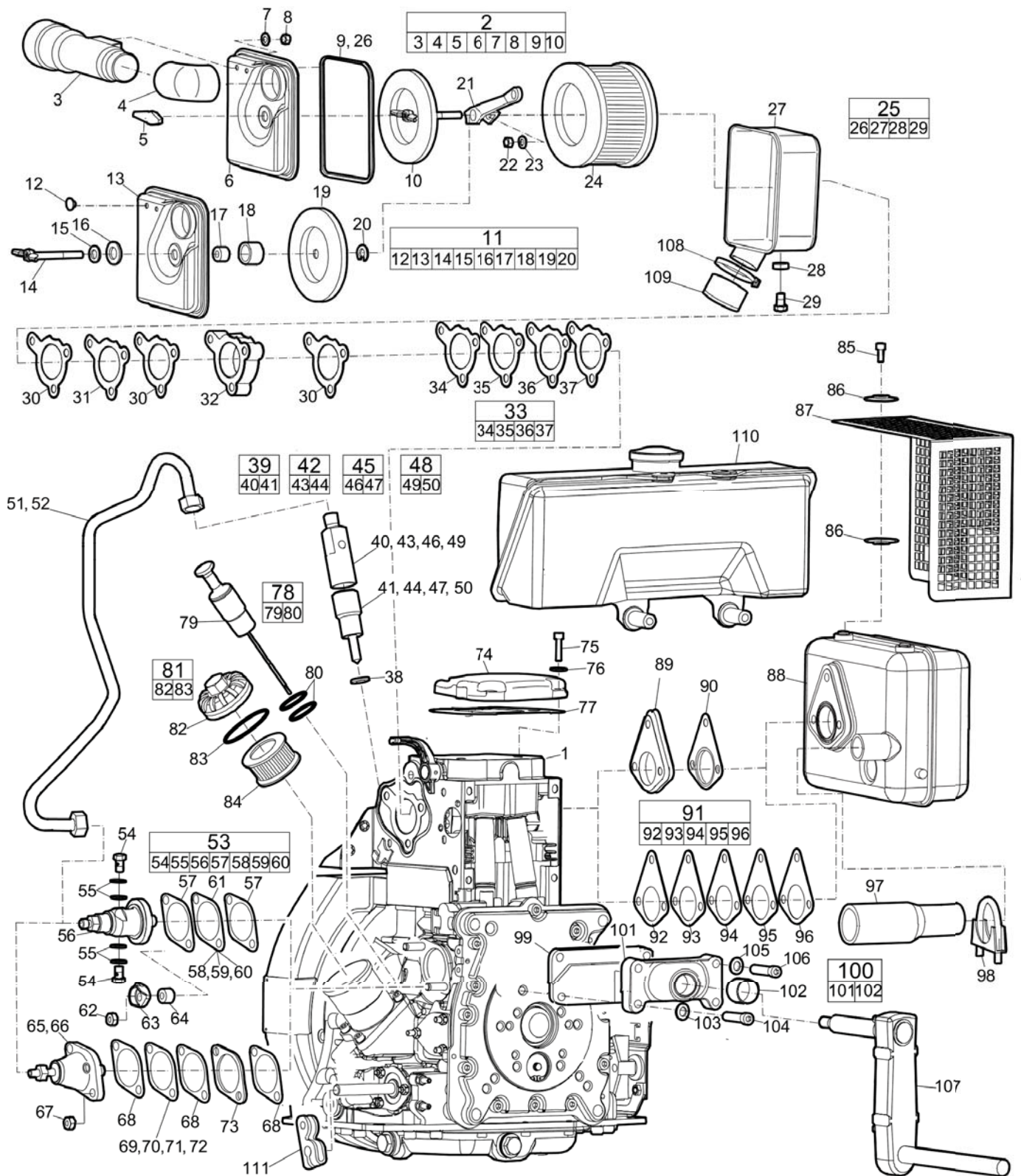
Refer to Parts Online for the most up to date information. The printed information might be outdated.

Fri Mar 28 10:10:59 UTC 2014

Item	Part Number	Name	Qty	L
99	4700935753	Guard	1	
100	4700239386	Crank handle holder, complete	1	
.101	-	Holder	1	
.102	3382100246	Bushing	1	
103	-	Washer, M8	2	
104	-	Screw, M8 x 35 mm	2	
105	-	Washer, M10	2	
106	-	Screw, M10 x 35 mm	2	
107	-	Stud, M12 x 50 mm	2	
108	-	Washer, M12	2	
109	-	Nut, M12	2	
110	4700239392	Safety crank handle	1	
111	4700239501	Starter	1	
112	4700239888	Hose clip	1	
113	4700239885	End cap	1	
114	-	Fuel tank	1	M
115	4700239508	Throttle control lever	1	

Comments for Page: Engine, Hatz 1D81Z electric start, EPA version

- A | Consist of item 1 to 115
- B | New version
- C | Old version
- D | Valid from engine serial number 073.25xxxxxxx
- E | Valid for engine serial number 073.24xxxxxxx
- F | Valid from engine serial number 073.20xxxxxxx to 073.23xxxxxxx
- G | Valid up to engine serial number 073.19xxxxxxx
- H | Valid from engine serial number 073.24xxxxxxx
- I | Valid up to engine serial number 073.23xxxxxxx
- J | Valid from engine serial number 073.24xxxxxxx
- K | Valid from engine serial number 073.20xxxxxxx to 073.23xxxxxxx
- L | Valid up to engine serial number 073.19xxxxxxx
- M | See section "Fuel tank"

Spare parts list Engine, Hatz 1D81Z manual start

Refer to Parts Online for the most up to date information. The printed information might be outdated.

Fri Mar 28 10:11:01 UTC 2014

Item	Part Number	Name	Qty	L
1	4700395242	Engine, complete, Hatz 1D81Z manual start	1	A
2	3382100249	Air filter cover, complete	1	B
.3	4700239883	Cyclone	1	
.4	4700239882	Rubber elbow	1	
.5	4700937017	Wing nut	1	
.6	-	Cover	1	
.7	-	Washer, M6	2	
.8	-	Nut, M6	2	
.9	4700239526	Gasket	1	
.10	3382100235	Holder	1	
11	3382100248	Air filter cover, complete	1	C
.12	4700239532	Plug	2	
.13	-	Cover	1	
.14	4700239531	Wing screw	1	
.15	4700239529	Insulating disc	1	
.16	4700239530	Washer, 36 x 11 x 3 mm, 1.42 x 0.43 x 0.12 in.	1	
.17	4700239525	Sealing ring	1	
.18	4700239524	Bushing	1	
.19	4700239523	Holder	1	
.20	4700239522	Circlip	1	
21	4700239519	Bracket	1	
22	-	Nut, M8	2	
23	-	Washer, M8	2	
24	4700239423	Air filter	1	
25	4700239516	Air filter cover, complete	1	
.26	4700239526	Gasket	1	
.27	-	Housing	1	
.28	4700239533	Joint	1	
.29	4700239534	Drain screw	1	
30	4700937439	Gasket	3	
31	4700937440	Insulating flange	1	
32	4700937443	Spacer	1	

Refer to Parts Online for the most up to date information. The printed information might be outdated.

Fri Mar 28 10:11:09 UTC 2014

Item	Part Number	Name	Qty	L
33	4700937442	Gasket, complete	1	
.34	-	Gasket	1	
.35	-	Gasket	1	
.36	-	Gasket	1	
.37	-	Gasket	1	
38	3382100247	Gasket	1	
39	3382100237	Injector, complete	1	D
.40	-	Injector part	1	
.41	3382100238	Nozzle	1	
42	4700950146	Injector, complete	1	E
.43	-	Injector part	1	
.44	3382100239	Nozzle	1	
45	4700939234	Injector, complete	1	F
.46	-	Injector part	1	
.47	4700939235	Nozzle	1	
48	4700239913	Injector, complete	1	G
.49	-	Injector part	1	
.50	4700940466	Nozzle	1	
51	3382100240	Fuel pipe	1	H
52	4700940476	Fuel pipe	1	I
53	4700950148	Injector pump, complete	1	J
.54	3382100241	Banjo screw	2	
.55	3382100242	Gasket	4	
.56	-	Pump part	1	
.57	4700939616	Shim, 0.10 mm, 0.004 in.	2	
.58	4700939778	Shim, 0.6 mm, 0.024 in.	1	
.59	4700939777	Shim, 0.9 mm, 0.035 in.	1	
.60	4700939776	Shim, 1.2 mm, 0.047 in.	1	
61	4700939779	Shim, 0.3 mm, 0.012 in.	1	
62	-	Nut, M8	2	
63	4700950257	Holder	2	
64	4700950263	Spacer	2	
65	4700938279	Injection pump	1	K

Refer to Parts Online for the most up to date information. The printed information might be outdated.

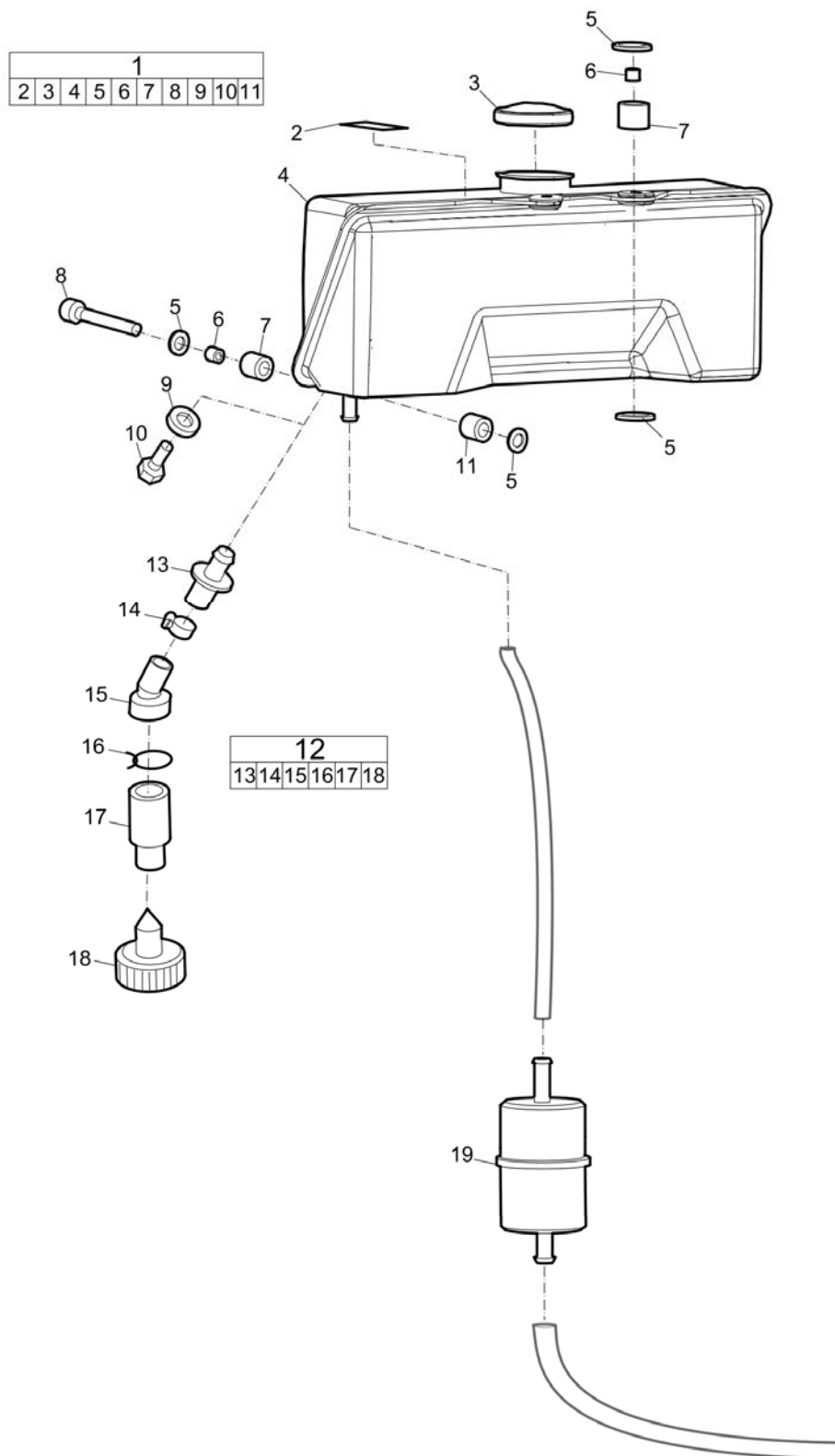
Fri Mar 28 10:11:09 UTC 2014

Item	Part Number	Name	Qty	L
66	4700239912	Injection pump	1	L
67	-	Nut, M8	2	
68	4700939616	Shim, 0.10 mm, 0.004 in.	3	
69	4700939779	Shim, 0.3 mm, 0.012 in.	1	
70	4700939778	Shim, 0.6 mm, 0.024 in.	1	
71	4700939777	Shim, 0.9 mm, 0.035 in.	1	
72	4700939776	Shim, 1.2 mm, 0.047 in.	1	
73	4700939774	Shim, 5.7 mm, 0.224 in.	1	
74	4700939606	Valve cover	1	
75	-	Screw, M6 x 25 mm	4	
76	-	Washer, M6	4	
77	4700239333	Gasket	1	
78	4700239426	Oil dipstick, complete	1	
.79	-	Dipstick	1	
.80	3382100236	O-ring	2	
81	4700935608	Filter cover, complete	1	
.82	-	Cover	1	
.83	4700239335	Gasket	1	
84	4700239326	Oil filter	1	
85	-	Screw, M6 x 12 mm	5	
86	-	Washer, M6	5	
87	4700239428	Cover	1	
88	4700239421	Silencer	1	
89	3382100243	Gasket	1	H
90	3382100244	Gasket	1	H
91	4700937454	Gasket, complete	1	I
.92	-	Gasket	1	
.93	-	Gasket	1	
.94	-	Gasket	1	
.95	-	Gasket	1	
.96	-	Gasket	1	
97	3382100245	Exhaust pipe	1	
98	4700239500	Pipe clamp	1	

Item	Part Number	Name	Qty	L
99	4700935753	Guard	1	
100	4700239386	Crank handle holder, complete	1	
.101	-	Holder	1	
.102	3382100246	Bushing	1	
103	-	Washer, M8	2	
104	-	Screw, M8 x 35 mm	2	
105	-	Washer, M10	2	
106	-	Screw, M10 x 35 mm	2	
107	4700239392	Safety crank handle	1	
108	4700239888	Hose clip	1	
109	4700239885	End cap	1	
110	-	Fuel tank	1	M
111	4700239508	Throttle control lever	1	

Comments for Page: Engine, Hatz 1D81Z manual start

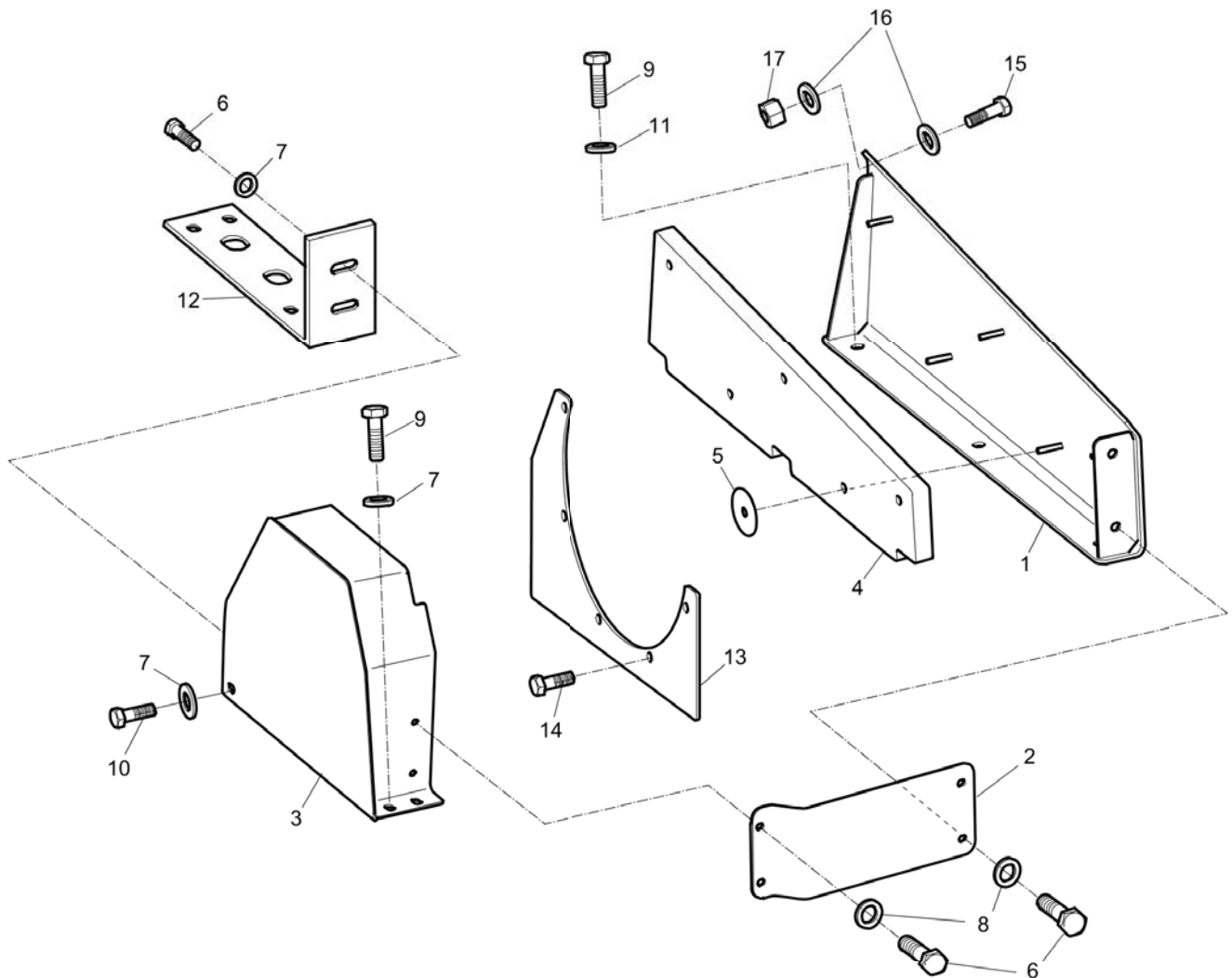
- A | Consist of item 1 to 111.
- B | New version
- C | Old version
- D | Valid from engine serial number 073.25xxxxxxx
- E | Valid for engine serial number 073.24xxxxxxx
- F | Valid from engine serial number 073.20xxxxxxx to 073.23xxxxxxx
- G | Valid up to engine serial number 073.19xxxxxxx
- H | Valid from engine serial number 073.24xxxxxxx
- I | Valid up to engine serial number 073.23xxxxxxx
- J | Valid from engine serial number 073.24xxxxxxx
- K | Valid from engine serial number 073.20xxxxxxx to 073.23xxxxxxx
- L | Valid up to engine serial number 073.19xxxxxxx
- M | See section "Fuel tank".

Spare parts list Fuel tank Hatz 1D81

Refer to Parts Online for the most up to date information. The printed information might be outdated.

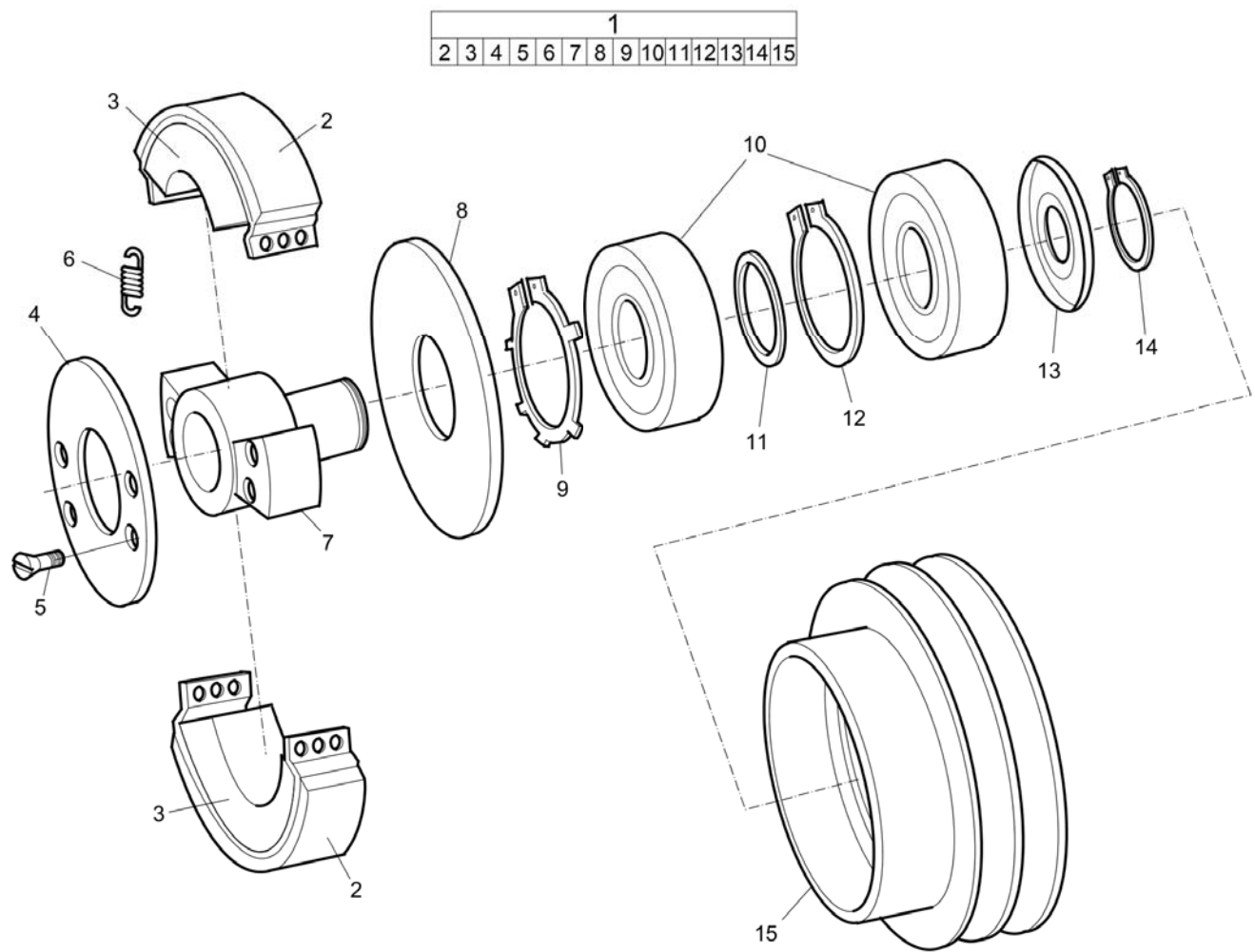
Fri Mar 28 10:11:11 UTC 2014

Item	Part Number	Name	Qty	L
1	3382100250	Fuel tank, complete	1	
.2	--	Label	1	
.3	4700239554	Cap	1	
.4	--	Fuel tank	1	
.5	4700937422	Rubber washer	12	
.6	4700937423	Bushing	6	
.7	4700937424	Rubber shell	6	
.8	--	Screw, M8 x 40 mm	4	
.9	4700238362	Washer	1	
.10	4700937435	Drain screw	1	
.11	4700937436	Bushing	4	
12	4700938339	Water separator, complete	1	
.13	3382100158	Nipple	1	
.14	3382100157	Clamp	1	
.15	--	Hose	1	
.16	--	Hose clip	1	
.17	--	Water separator	1	
.18	--	Drain screw	1	
19	4700937430	Fuel filter	1	

Spare parts list V-belt cover

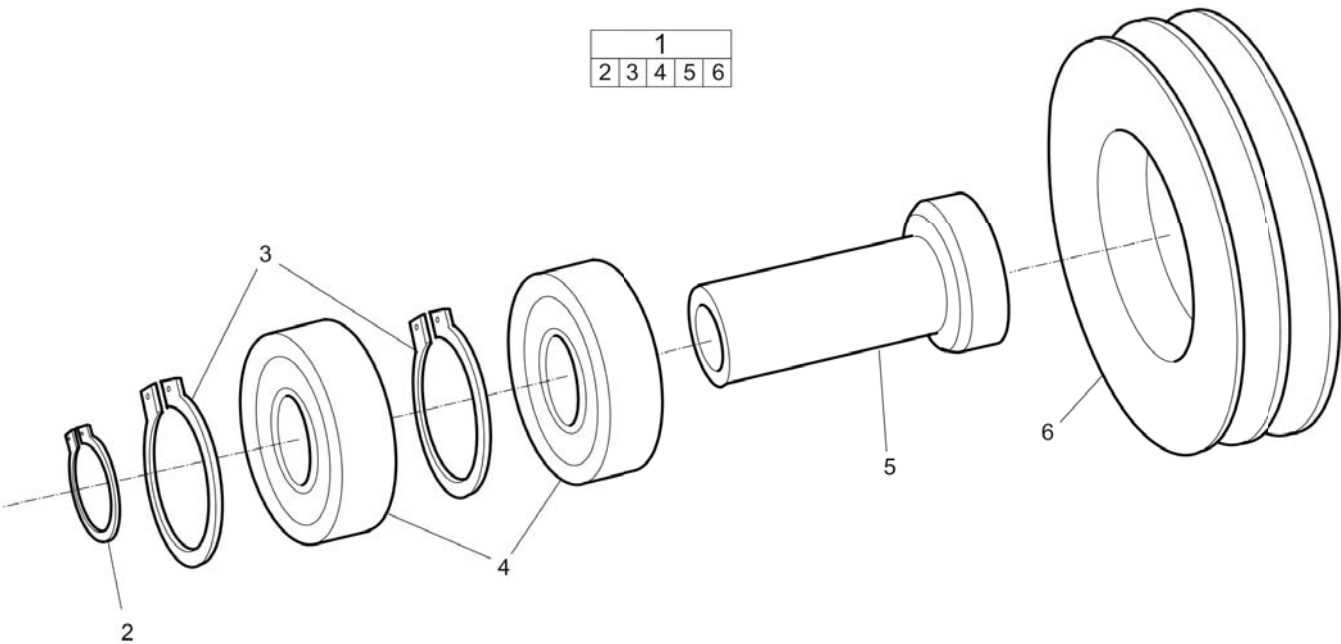
Item	Part Number	Name	Qty	L
1	3382010480	Protective cover	1	
2	3382010481	Bracket	1	
3	3382010478	V-belt cover	1	
4	4700386599	Insulation	1	
5	4700373476	Insulating washer	5	
6	-	Screw, M12 x 25 mm 8.8 A3K	6	
7	-	Washer, 13 x 30 x 4 mm, 0.51 x 1.18 x 0.16 in. 300 HV	5	
8	-	Washer, 8.4 x 16 x 3 mm, 0.33 x 0.63 x 0.12 in. 300 HV	4	
9	-	Screw, M12 x 25 mm 8.8 A3K	5	
10	-	Screw, M12 x 20 mm 8.8 A3K	1	
11	-	Washer, 13 x 30 x 4 mm, 0.51 x 1.18 x 0.16 in. 300 HV	3	
12	4700394699	Bracket	1	
13	4700386316	Plate	1	
14	-	Screw, M10 x 20 mm 8.8 A3K	5	
15	-	Screw, M10 x 30 mm 8.8 A3K	2	
16	-	Washer, 10.5 x 22 x 4 mm, 0.41 x 0.87 x 0.16 in. 300 HV	4	
17	-	Nut, M10 A3K	2	

Spare parts list Centrifugal clutch



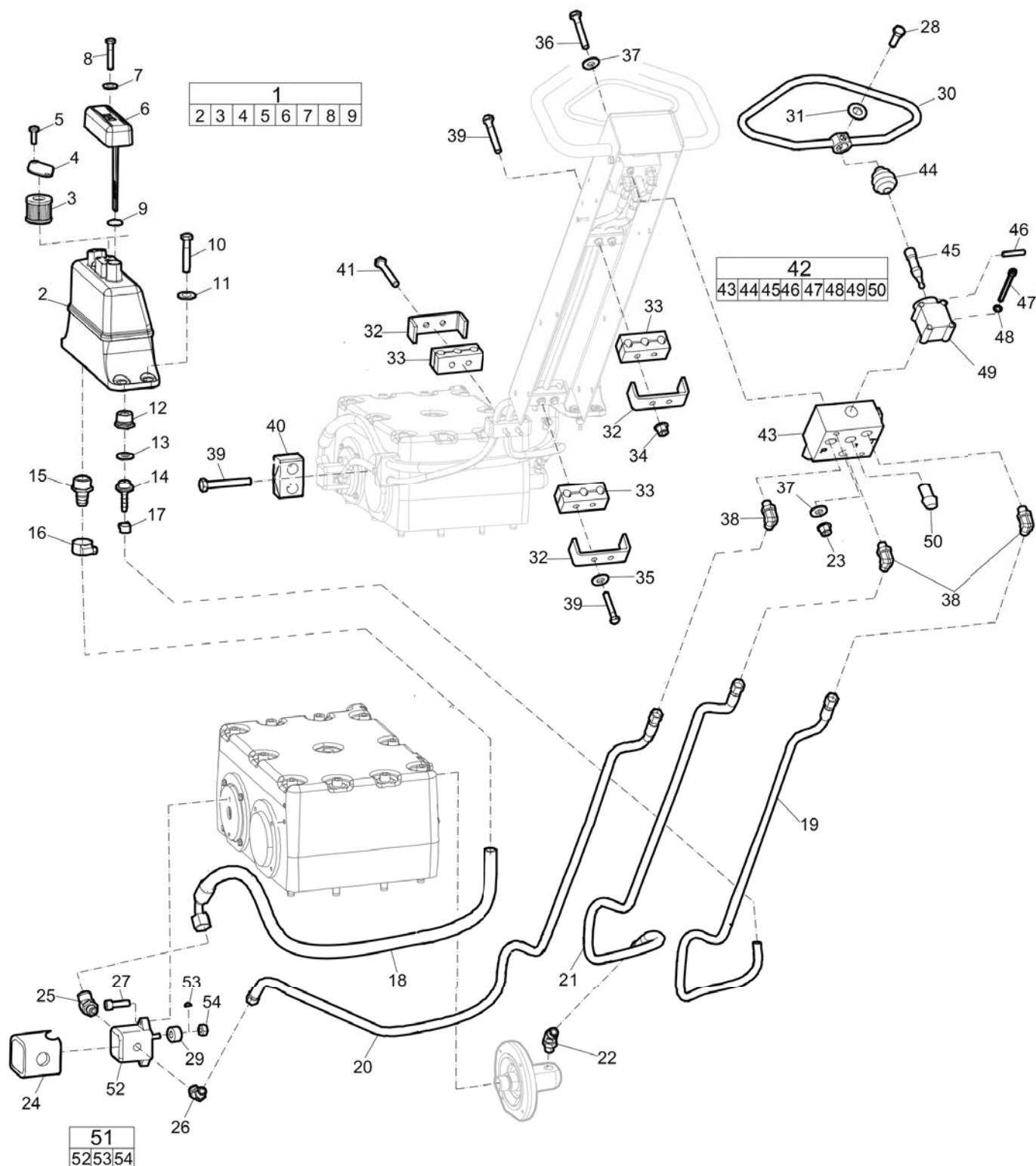
Item	Part Number	Name	Qty	L
1	4812070288	Centrifugal clutch, complete	1	
.2	4700939359	Cluch	2	
.3	4700939358	Weight	2	
.4	4700939360	Cover	1	
.5	4700939361	Screw	4	
.6	4700421246	Spring	4	
.7	4700939357	Hub	1	
.8	4700939362	Cover	1	
.9	4700939363	Lock washer	1	
.10	3382100008	Ball bearing	2	
.11	4700939356	Washer	1	
.12	4700938725	Retainer ring	1	
.13	4700938727	Nilos ring	1	
.14	4700938726	Snap ring	1	
.15	4700939355	V-belt pulley	1	

Spare parts list Belt tightener



Item	Part Number	Name	Qty	L
1	4700378060	Belt tightener, complete	1	
.2	4700150012	Retaining ring	1	
.3	4700151019	Retaining ring	2	
.4	4700111180	Ball bearing	2	
.5	4700378061	Shaft	1	
.6	4700380517	V-belt pulley	1	

Spare parts list Hydraulic system



Refer to Parts Online for the most up to date information. The printed information might be outdated.

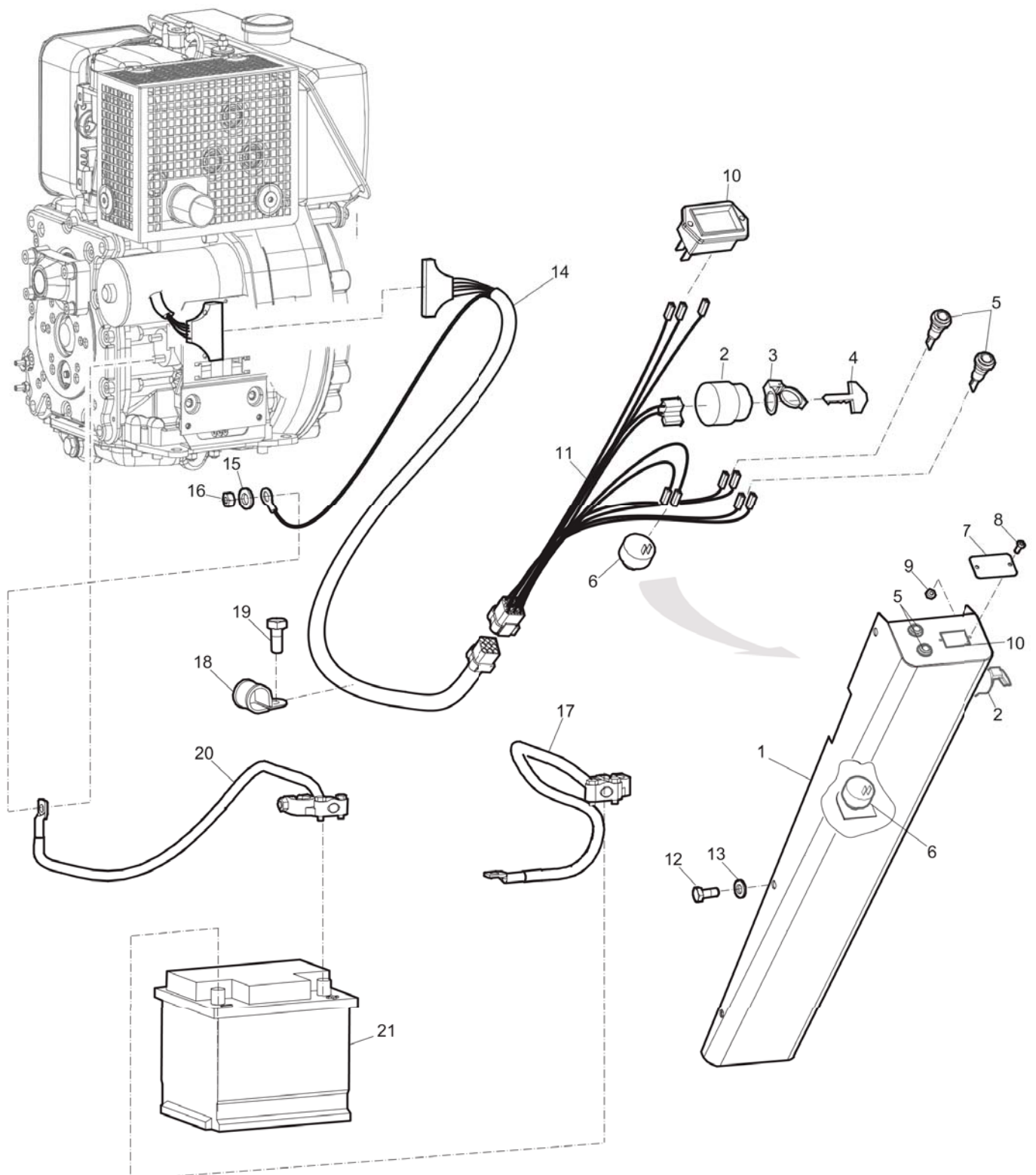
Fri Mar 28 10:11:40 UTC 2014

Item	Part Number	Name	Qty	L
1	4700376676	Hydraulic oil tank, complete	1	
.2	-	Oil tank	1	
.3	4700381566	Air filter	1	
.4	4700381563	Holder	1	
.5	-	Screw, K50 x 12 mm Type KX-PT	2	
.6	4700381385	Cover	1	
.7	-	Washer, 8.4 x 16 x 1.5 mm, 0.33 x 0.63 x 0.06 in. 300 HV	1	
.8	-	Screw, M8 x 25 mm 8.8 A2K	1	
.9	4700160110	O-ring, 16.3 x 2.4 mm, 0.64 x 0.10 in	1	
10	-	Screw, M10 x 55 mm 8.8 A3K	4	
11	-	Washer, 10.5 x 22 x 2 mm, 0.41 x 0.87 x 0.08 in. 300 HV	4	
12	4700383039	Reducer	1	
13	-	Washer, 13.3 x 18.9 x 1.5 mm, 0.52 x 0.74 x 0.06 in. Copper	1	
14	4700383353	Hose coupling	1	
15	4700383038	Hose coupling	1	
16	4700313003	Hose clamp	1	
17	4700313108	Hose clamp	1	
18	4812070426	Hydraulic hose	1	
19	3382012420	Hydraulic hose	1	
20	3382012421	Hydraulic hose	1	
21	3382012422	Hydraulic hose	1	
22	4700234481	Elbow, 90°	1	
23	-	Nut, M6 A2K	2	
24	4700280540	Cover	1	
25	4700792253	Elbow	1	
26	4700792443	Elbow connector 45°	1	
27	-	Screw, M6 x 20 mm 8.8 A2K	2	
28	-	Screw, M8 x 25 mm 8.8 A2K	1	
29	4700928894	Sleeve	1	
30	4812070025	Control lever	1	

Item	Part Number	Name	Qty	L
31	-	Washer, 8.4 x 16 x 1.5 mm, 0.33 x 0.63 x 0.06 in. 300 HV	1	
32	3382010182	Bracket	3	
33	4700280534	Rubber block	3	
34	-	Lock nut, M8 x 1.25 mm A2K	2	
35	-	Washer, 8.4 x 18 x 2 mm, 0.33 x 0.71 x 0.08 in.	2	
36	-	Screw, M6 x 50 mm 8.8 A2K	2	
37	-	Washer, 6.4 x 14 x 2 mm, 0.25 x 0.55 DIN 6796.	4	
38	4700791397	Elbow 90°, O-ring	3	
39	-	Screw, M8 x 50 mm 8.8 A2K	5	
40	4700383458	Hose holder	1	
41	-	Screw, M8 x 50 mm 8.8 A2K	2	
42	4700281375	Hydraulic valve, complete	1	
.43	-	Valve body	1	
.44	3382100271	Rubber cover	1	A
.45	3382100270	Lever	1	A
.46	3382100269	Pin	1	A
.47	3382100272	Screw	2	A
.48	3382100273	Washer	2	A
.49	3382100268	Housing	1	A
.50	3382100288	Measuring nipple	1	A
51	4700383562	Hydraulic pump	1	
.52	-	Hydraulic pump	1	
.53	-	Key	1	
.54	-	Nut, M7	1	

Comments for Page: Hydraulic system

A | For valve, complete marked with "Caproni".

Spare parts list Electric equipment

Refer to Parts Online for the most up to date information. The printed information might be outdated.

Fri Mar 28 10:12:03 UTC 2014

Item	Part Number	Name	Qty	L
1	4700378223	Cover	1	
2	4700238158	Ignition switch	1	
3	4700904428	Dust cover	1	
4	4700238236	Ignition key	1	
5	4700791058	Diode lamp	2	
6	4700385599	Buzzer	1	
7	4700376867	Cover	1	
8	-	Screw, M3 x 10 mm 8.8 A2-70	2	
9	-	Nut, M3 DIN985	2	
10	-	Hour meter	1	A
11	4700378225	Wiring harness	1	
12	-	Screw, M8 x 16 mm 8.8 A2K	7	
13	-	Washer, 8.4 x16 x1.5 mm 8, 0.33 x 0.63 x 0.06 in. 300 HV	7	
14	4700282727	Wiring harness	1	
15	-	Nut, M8	1	
16	-	Washer, M8	1	
17	4700281202	Connection cable	1	B
18	-	Clamp	1	
19	-	Screw	1	
20	4700281201	Connection cable	1	C
21	4700281896	Battery	1	

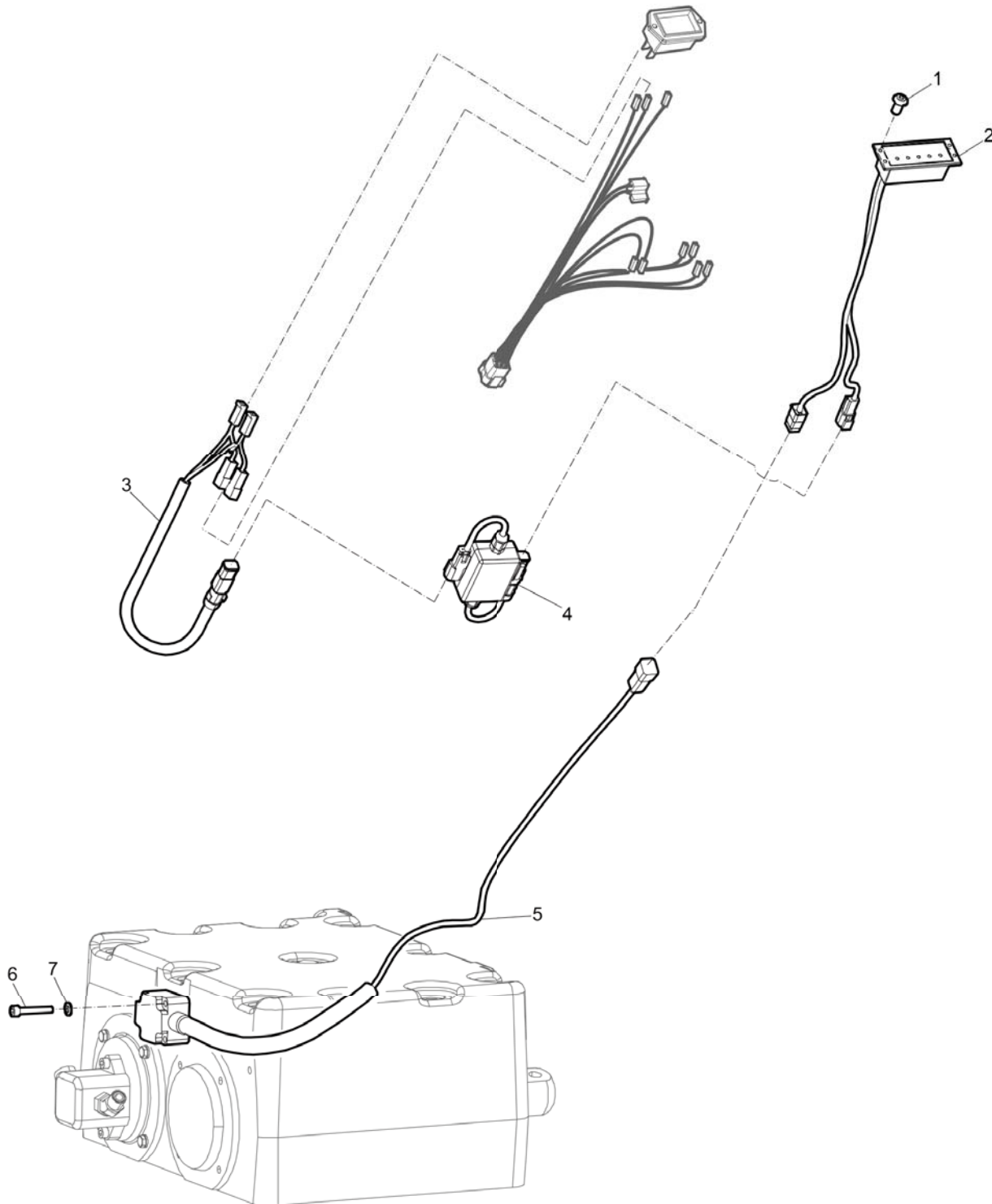
Comments for Page: Electric equipment

(L)OCAL REMARKS

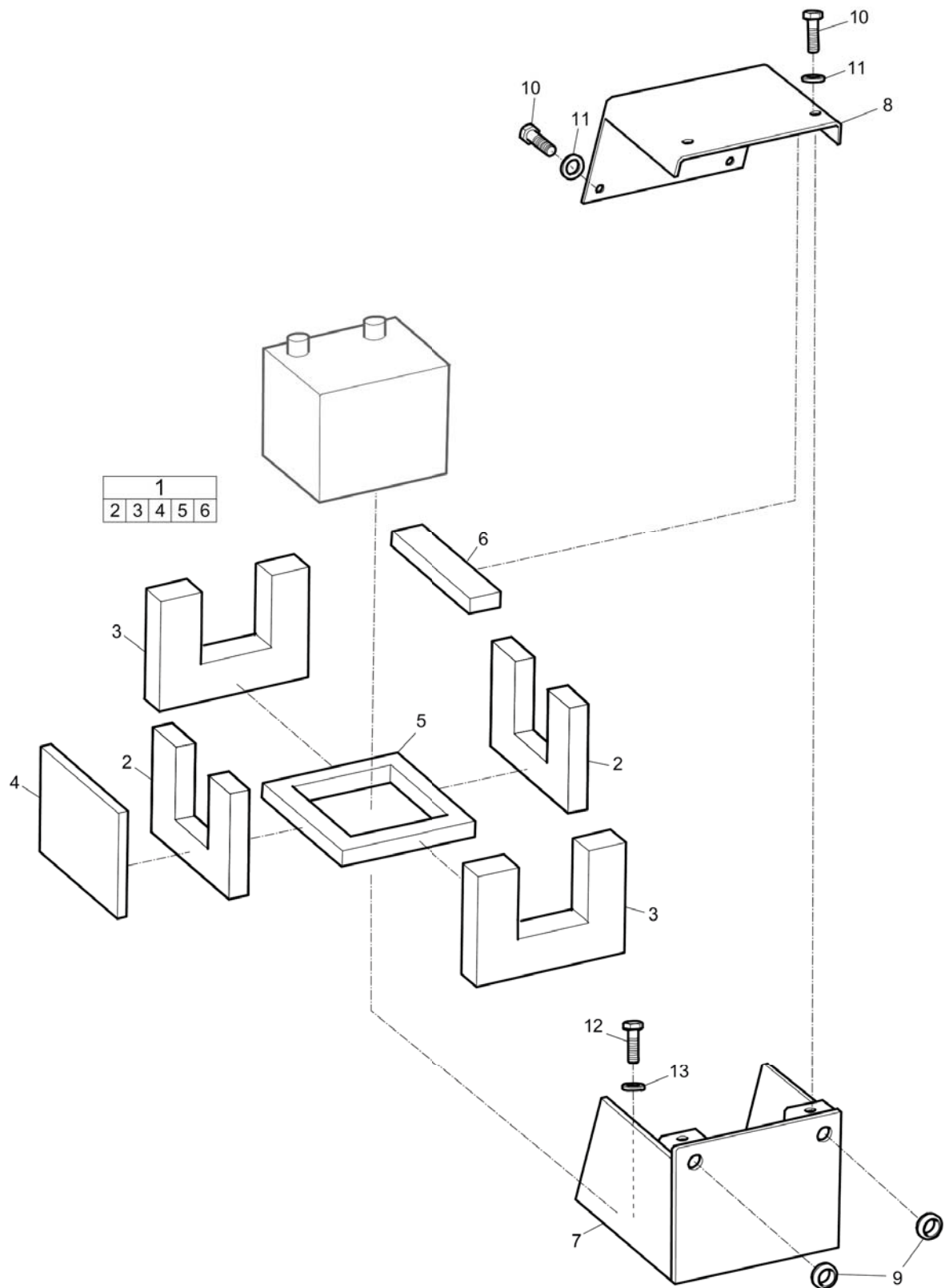
A | See kit "Hour meter"

B | Connected to negative terminal of battery

C | Connected to positive terminal of battery

Spare parts list Electric equipment, compaction indicator (CI)

Item	Part Number	Name	Qty	L
1	-	Screw, M5 x 10 mm	4	
2	3382012154	Display unit	1	
3	3382012189	Wiring harness	1	
4	3382012418	Voltage stabilizator	1	
5	4812070376	Measure unit	1	
6	-	Screw, M6 x 35 mm 8.8 A2K	4	
7	-	Washer, 6.4 x 12 x 1.5 mm, 0.25 x 0.47 x 0.06 in.	4	

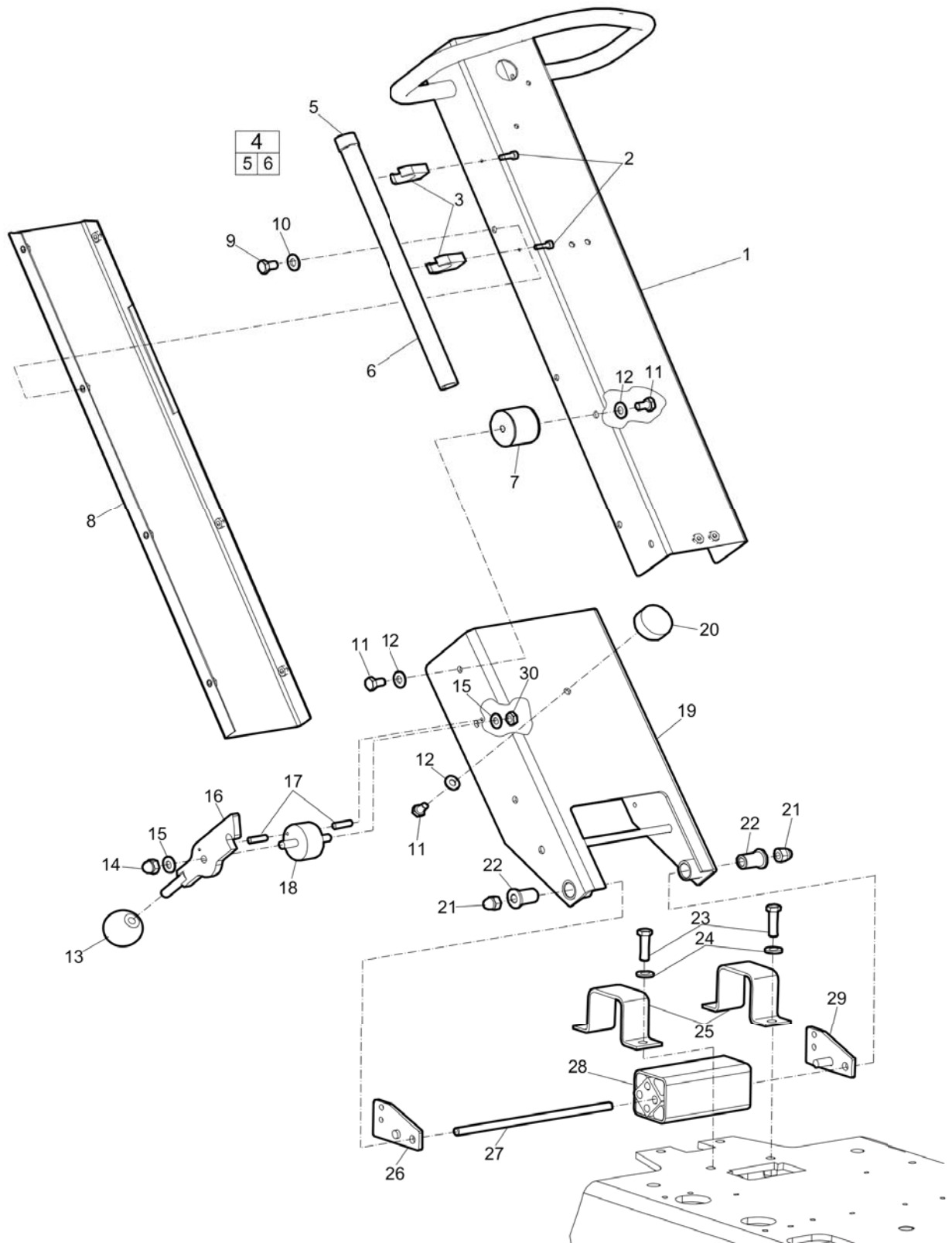
Spare parts list Battery box installation

Refer to Parts Online for the most up to date information. The printed information might be outdated.

Fri Mar 28 10:12:19 UTC 2014

Item	Part Number	Name	Qty	L
1	4700281895	Insulation kit	1	
.2	-	Insulation	2	
.2	--	Insulation	2	
.3	-	Insulation	2	
.3	--	Insulation	2	
.3	--	Insulation	2	
.4	-	Insulation	1	
.4	--	Insulation	1	
.4	--	Insulation	1	
.5	-	Insulation	1	
.5	--	Insulation	1	
.5	--	Insulation	1	
.6	-	Insulation	1	
.6	--	Insulation	1	
.6	--	Insulation	1	
7	3382010488	Battery box	1	
8	3382010487	Cover	1	
9	4700929200	Grommet	2	
10	-	Screw, M8 x 16 mm 8.8 A2K	4	
11	-	Washer, 8.4 x16 x1.5 mm, 0.33 x 0.63 x 0.06 in. 300 HV	4	
12	-	Screw, M10 x 16 mm 8.8 A3K	1	
13	-	Washer, 10.5 x 22 x 4 mm, 0.41 x 0.87 x 0.16 in. 300 HV	1	

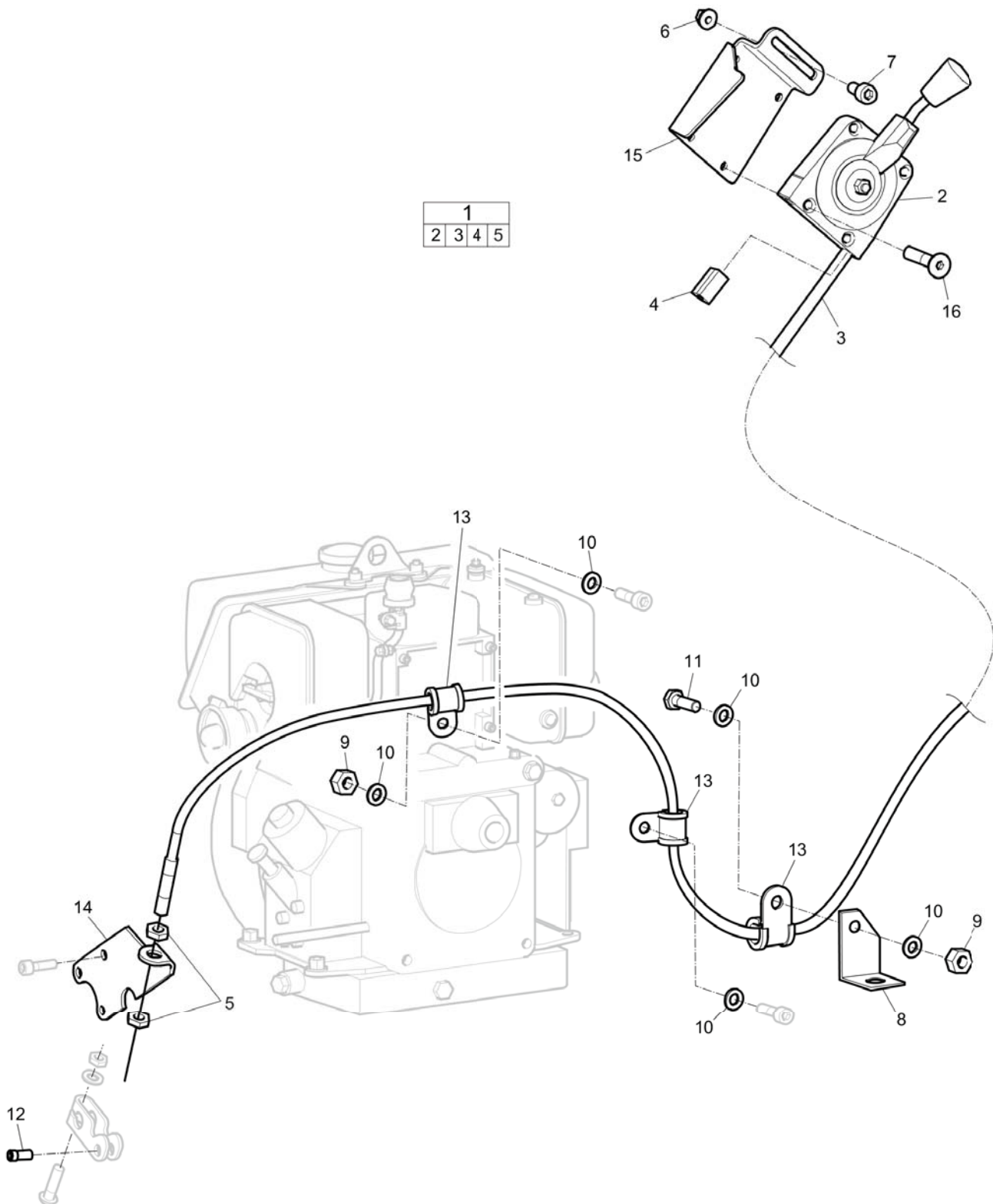
Spare parts list Handle



Refer to Parts Online for the most up to date information. The printed information might be outdated.

Fri Mar 28 10:12:27 UTC 2014

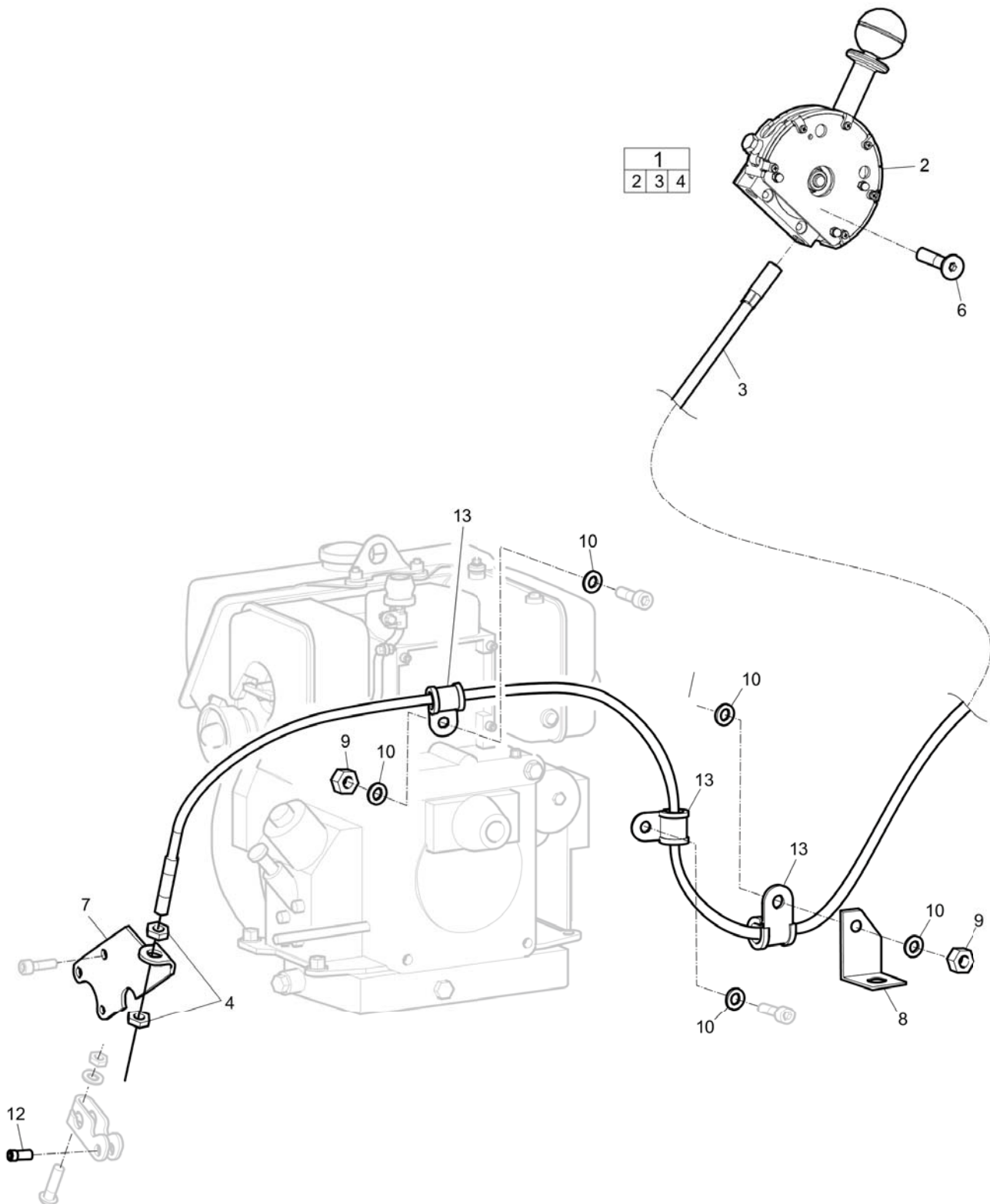
Item	Part Number	Name	Qty	L
1	3382012068	Handle	1	
2	-	Screw, M5 x 16 mm	2	
3	4700281116	Ryw-clips	2	
4	4700281852	Oil drain, complete	1	
.5	-	Connection	1	
.6	4700244059	Hose	1	
7	3382010490	Shock absorber	4	
8	4700377312	Cover	1	
9	-	Screw, M8 x 16 mm 8.8 A2K	8	
10	-	Washer, 8.4 x16 x1.5 mm, 0.33 x 0.63 x 0.06 in. 300 HV	8	
11	-	Screw, M10 x 16 mm 8.8 A3K	9	
12	-	Washer, 10.5 x 22 x 2 mm, 0.41 x 0.87 x 0.08 in. 300 HV	9	
13	4700281382	Ball knob M12, D= 50mm	1	
14	-	Nut, M10	1	
15	-	Washer, 10.5 x 22 x 4 mm, 0.41 x 0.87 x 0.16 in. 300 HV	2	
16	4700282724	Hook	1	
17	4700629059	Spirol pin	2	
18	4700281431	Shock absorber	1	
19	3382010485	Handle bracket	1	
20	4700281804	Rubber stop	1	
21	-	Nut, M12	2	
22	3382010495	Bushing	2	
23	4700500194	Screw	4	
24	4700904703	Steel plain washer	4	
25	3382010496	Clamp	2	
26	3382010493	Retainer, right	1	
27	3382010491	Stud	1	
28	3382010492	Shock absorber	1	
29	3382010494	Retainer, left	1	
30	4700570006	Nut	1	

Spare parts list Non EPA throttle control

Refer to Parts Online for the most up to date information. The printed information might be outdated.

Fri Mar 28 10:12:42 UTC 2014

Item	Part Number	Name	Qty	L
1	4700397492	Throttle control, complete	1	
.2	--	Throttle handle	1	
.3	4700380751	Control cable	1	
.4	4700238443	Square nipple	1	
.5	--	Nut, M10	2	
6	-	Nut, M6 x 1 mm A2K	1	
7	-	Screw, M6 x 20 mm 8.8 A2K	1	
8	4700282707	Bracket	1	
9	-	Nut, M6 A2K	3	
10	-	Washer, 6.4 x 12 x 1.5 mm, 0.25 x 0.47 x 0.06 in. 300 HV	6	
11	-	Screw, M6 x 20 mm 8.8 A2K	1	
12	4700281236	Nipple	1	
13	4700921065	Clamp	3	
14	4700281228	Bracket	1	
15	4812070115	Bracket	1	
16	-	Screw, M5 x 30 mm A2-70	4	

Spare parts list Throttle control, EPA version

Refer to Parts Online for the most up to date information. The printed information might be outdated.

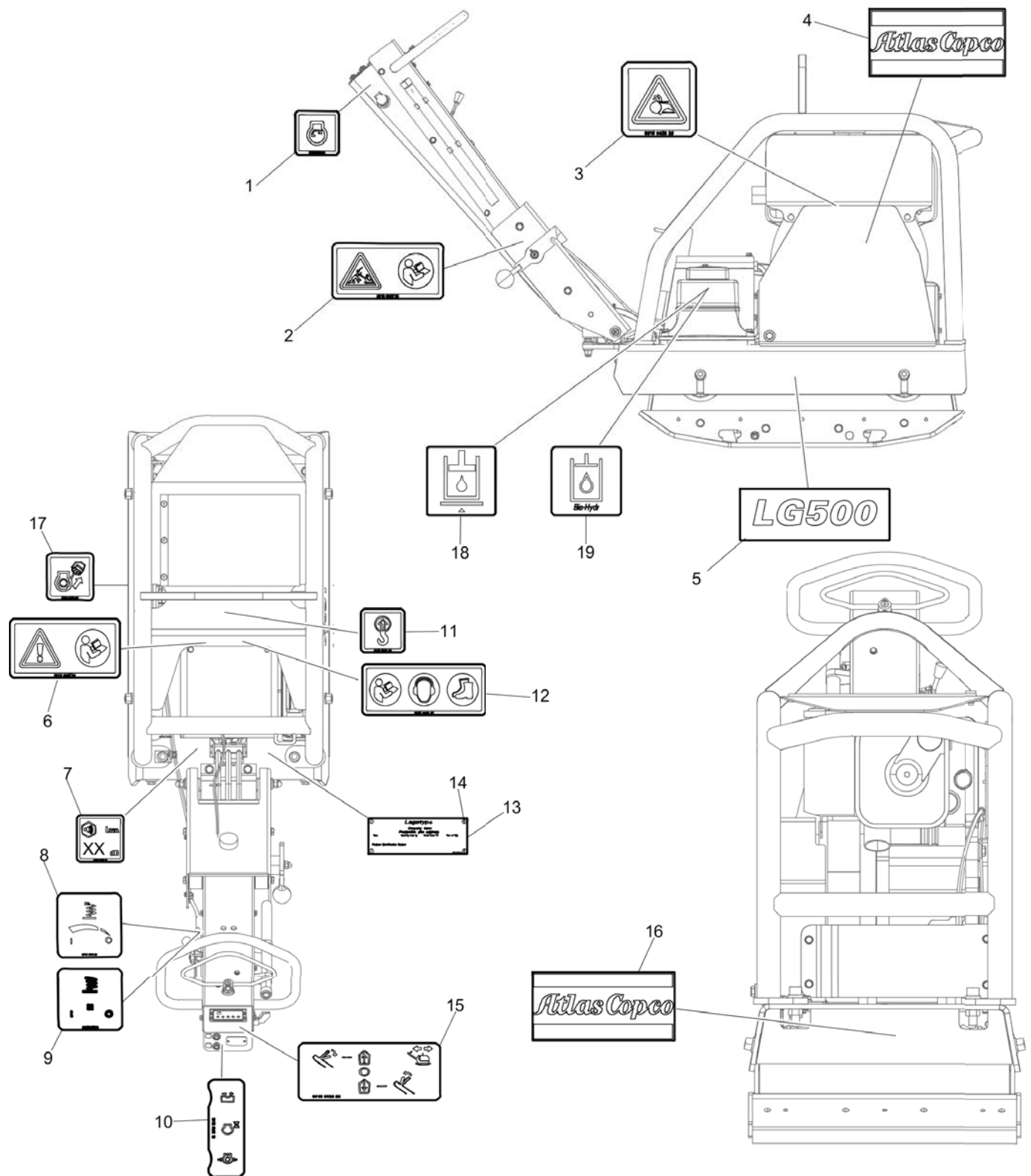
Fri Mar 28 10:12:51 UTC 2014

Item	Part Number	Name	Qty	L
1	3382012117	Throttle control, complete	1	A
.2	-	Throttle handle	1	
.3	3382100299	Control cable	1	
.4	-	Nut, M10	2	
6	-	Screw, M5 x 30 mm A2-70	4	
7	4700281228	Bracket	1	
8	4700282707	Bracket	1	
9	-	Nut, M6 A2K	3	
10	-	Washer, 6.4 x 12 x 1.5 mm, 0.25 x 0.47 x 0.06 in. 300 HV	6	
11	-	Screw, M6 x 20 mm 8.8 A2K	1	
12	4700281236	Nipple	1	
13	4700921065	Clamp	3	

Comments for Page: Throttle control, EPA version

A | EPA (US Environmental Protection Agency) throttle control with three fixed positions.

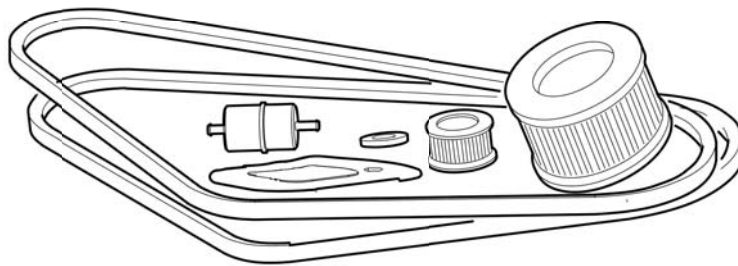
Spare parts list Labels



Refer to Parts Online for the most up to date information. The printed information might be outdated.

Fri Mar 28 10:12:57 UTC 2014

Item	Part Number	Name	Qty	L
1	8915002520	Label, electric engine start	1	
2	8915002523	Safety label, lock handle	1	
3	8915002526	Safety label, rotating V-belts	1	
4	8915300077	Product label, "Atlas Copco"	2	
5	8915300079	Product label, "LG 500"		
6	8915002529	Safety label, read instruction	1	
7	8915002524	Label, sound power label	1	
8	8915002521	Label, throttle control non EPA	1	
9	8915002530	Label, throttle control EPA	1	
10	8915002519	Label, charging, hour meter and engine oil pressure	1	
11	8915002528	Label, lifting point	1	
12	8915002387	Safety label, read instructions, ear protection and safety boots	1	
13	-	Data plate	1	
14	-	Drive screw	4	
15	8915002525	Label, operator panel	1	
16	8915300078	Product label, "Atlas Copco"	1	
18	4700272373	Label, hydraulic oil level	1	
19	4700904601	Label, biological hydraulic oil	1	

Kits One year service kit

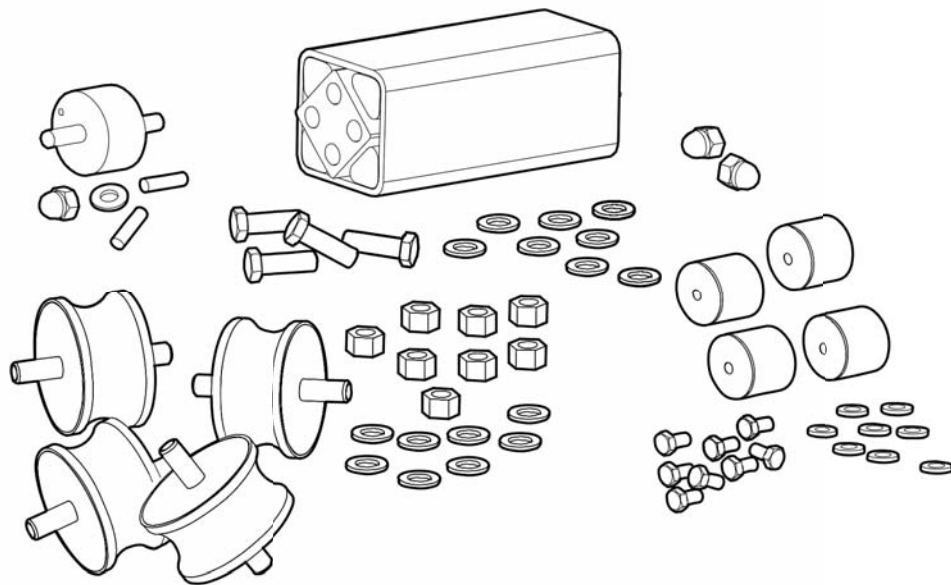
Item	Part Number	Name	Qty	L
1	3382100028	One year service kit		
.2	4700239423	Air filter	5	
.3	4700937873	Fuel filter	5	
.4	4700748479	Gasket	1	A
.5	4700386312	V-belt	2	B
.6	4700239333	Gasket	1	C
.7	4700239326	Oil filter	5	

Comments for Page: One year service kit

A | For oil drain plug

B | See section "Engine installation"

C | For valve cover

Kits Shock absorber repair kit

Item	Part Number	Name	Qty	L
1	3382100033	Shock absorber repair kit	1	
.2	4700280454	Shock absorber	4	A
.3	-	Nut, M16 A3K	8	B
.4	-	Washer, 17 x 30 x 3 mm, 0.70 x 1.18 x 0.12 in. 300 HV	8	B
.5	3382010490	Shock absorber	4	C
.6	-	Screw, M10 x 16 mm 8.8 A3K	8	C
.7	-	Washer, 10.5 x 22 x 2 mm,	8	C
.8	3382010492	Shock absorber	1	C
.9	-	Screw, M12 x 40 mm 8.8 A3K	4	C
.10	-	Washer, 13 x 24 x 6 mm, 0.51 x 0.95 x 0.16 in. 300 HV	8	C
.11	-	Nut, M12	4	C
.12	4700281431	Shock absorber	1	C
.13	4700629059	Spirol pin	2	C
.14	-	Washer, 10.5 x 22 x 4 mm, 0.41 x 0.87 x 0.16 in. 300 HV	1	C
.15	-	Nut, M10	1	C

Comments for Page: Shock absorber repair kit

A | For ground plate. See section "Ground plate and eccentric element installation".

B | See section "Ground plates and engine plate"

C | For handle. See section "Handle".

Kits Eccentric element repair kit

Item	Part Number	Name	Qty	L
1	3382100037	Eccentric element repair kit	1	
.2	4700928794	Radial lip-type seal	1	A
.3	4700928786	Ball bearing	4	A
.4	-	Washer, 6.4 x 12 x 1.5 mm, 0.25 x 0.47 x 0.06 in. 300 HV	16	A
.5	-	Screw, M6 x 20 mm 8.8 A2K	16	A
.6	-	Copper washer, 16.7 x 24 x 1.5 mm, 0.66 x 0.94 x 0.06 in. TYPE A, M16	1	A
.7	4700928787	Retaining ring	1	A
.8	4700929906	Packing	1	A
.9	4700928796	Ball bearing	2	A

Comments for Page: Eccentric element repair kit

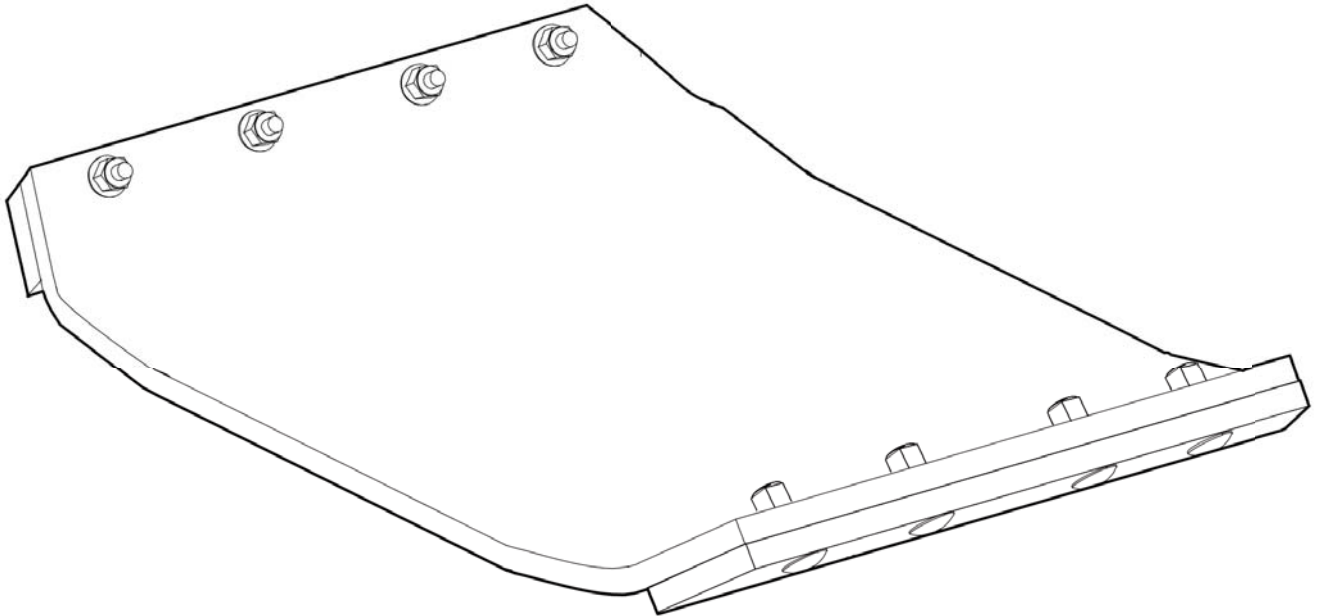
A | See section "Eccentric element".

Kits Forward and reverse piston repair kit

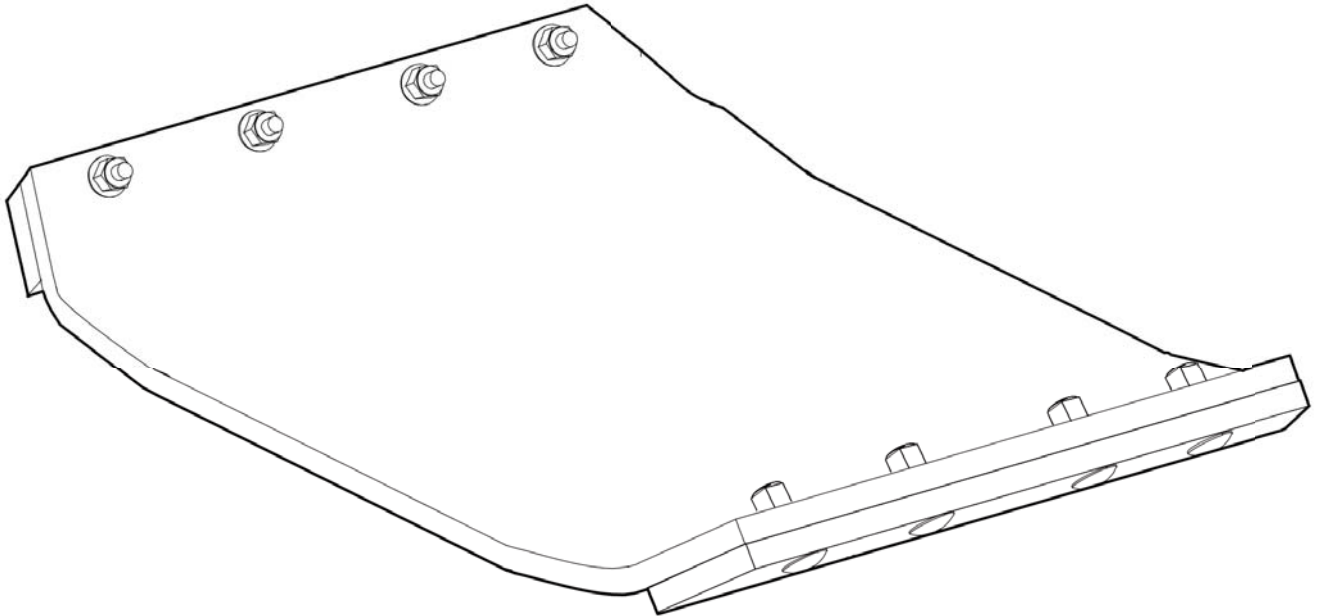
Item	Part Number	Name	Qty	L
1	3382100035	Forward and reverse piston repair kit	1	
.2	4700281276	Sealing ring	1	A
.3	4812070044	Piston rod	1	A
.4	4700151039	Retaining ring	1	A
.5	4812070359	Ball bearing	1	A
.6	4700150002	Retaining ring	1	A
.7	4812070362	Thrust ball bearing	1	A
.8	4812070363	Spring washer	1	A
.9	4812070042	Hydraulic cylinder	1	A
.10	4700629062	Spring pin	1	A
.11	-	Washer, 6.4 x 12 x 1.5 mm , 0.25 x 0.47 x 0.06 in. 300 HV	4	A
.12	-	Screw, M6 x 20 mm 8.8 A2K	4	A

Comments for Page: Forward and reverse piston repair kit

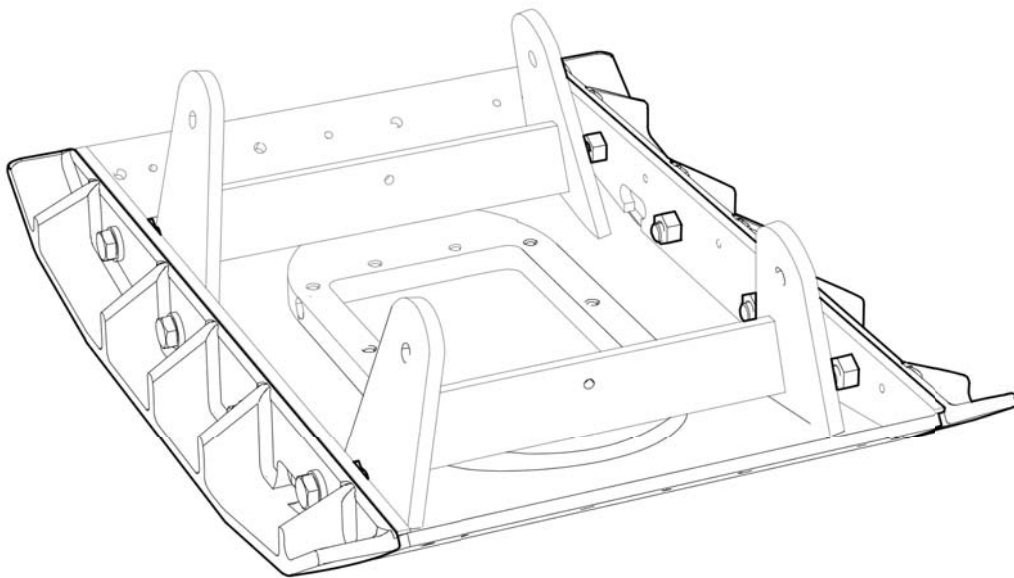
A | See section "Eccentric element".

Kits Block paving plate kit 750 mm (29.5 in.)

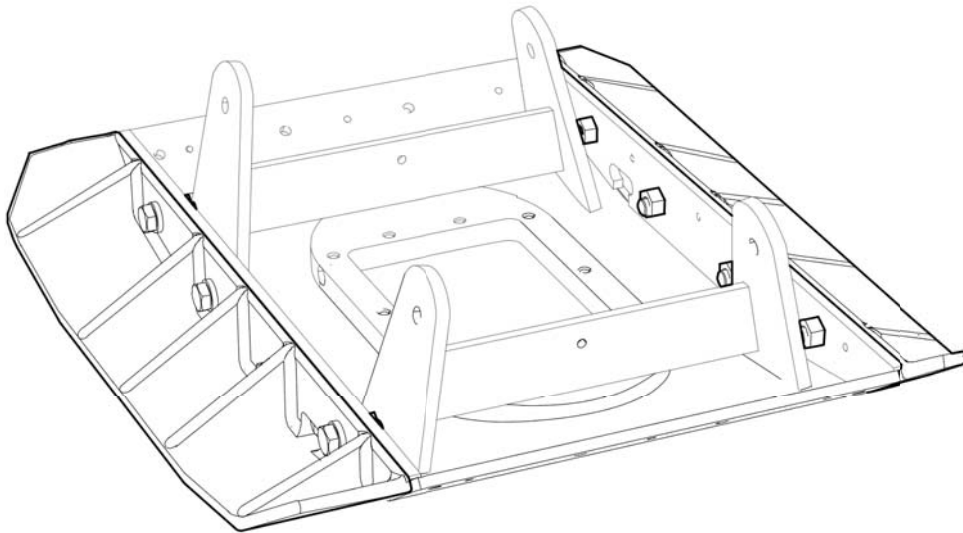
Item	Part Number	Name	Qty	L
1	4700382001	Block paving plate kit	1	
.2	-	Polyurethane plate, 750 mm, 29.5 in.	1	
.3	-	Bracket	2	
.4	-	Nut, M10 x 1.5 mm A3K	8	
.5	-	Screw, M10 x 45 mm 4.6 A3K	8	

Kits Block paving plate kit 850 mm (33.5 in.)

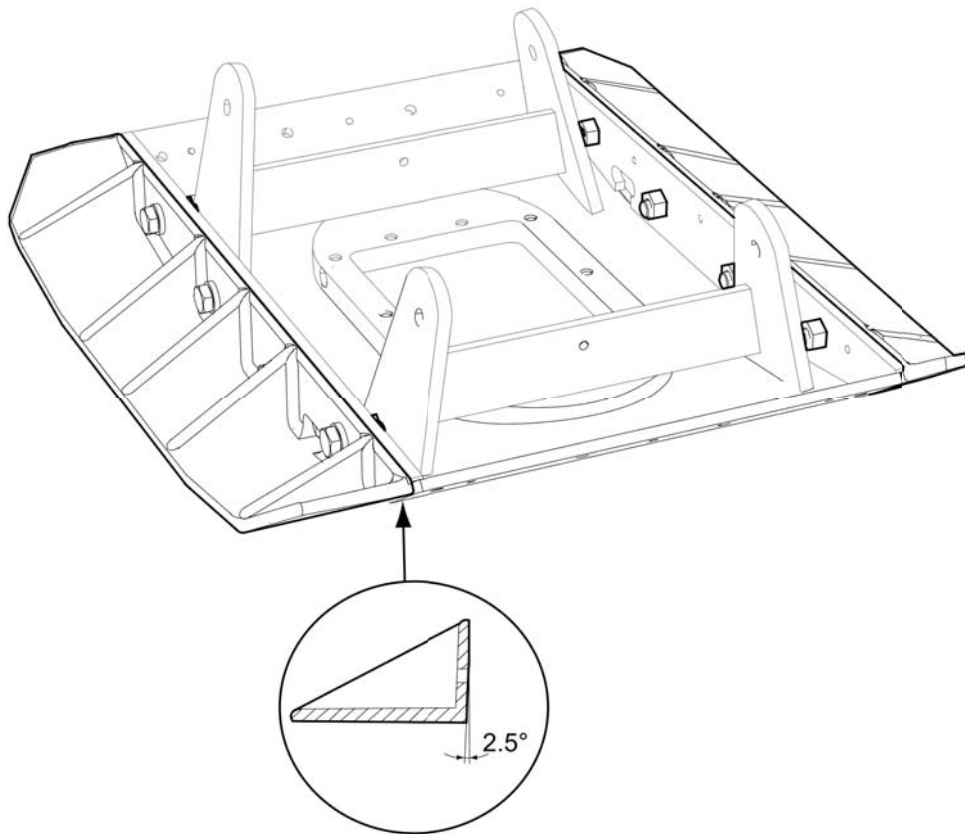
Item	Part Number	Name	Qty	L
1	4700382005	Block paving plate kit	1	
.2	-	Polyurethane plate, 850 mm, 33.5 in.	1	
.3	-	Bracket	2	
.4	-	Nut, M10	8	
.5	-	Screw, M10 x 50 mm 8.8 A3K	8	
.6	-	Washer, 10.5 x 22 x 2 mm, 0.41 x 0.87 x 0.08 in. 300 HV	8	

Kits Extension plate kit 2 x 75 mm (2 x 2.95 in.)

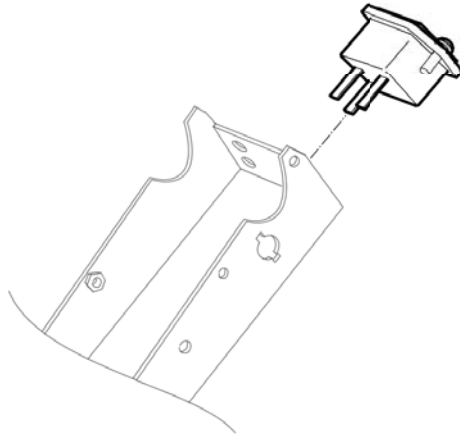
Item	Part Number	Name	Qty	L
1	4812070678	Extension plate kit 2 x 75 mm (2 x 2.95 in.)	1	
.2	-	Extension plate, 75 mm, 2.95 in.	2	
.3	-	Washer, 21 x 36 x 6 mm, 0.83 x 1.42 x 0.24 300 HV	8	
.4	-	Screw, M20 x 50 mm 8.8 A9K	8	

Kits Extension plate kit 2 x 150 mm (2 x 5.90 in.)

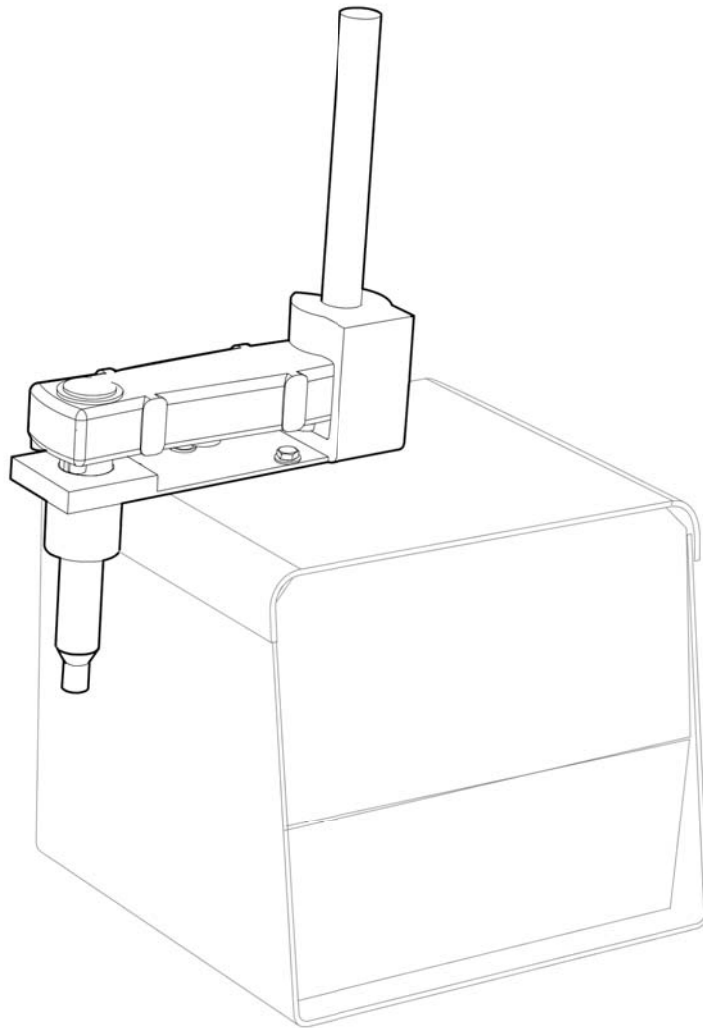
Item	Part Number	Name	Qty	L
1	4700382067	Extension plate kit 2 x 150 mm (2 x 5.90 in.)	1	
.2	-	Extension plate, 150 mm, 5.90 in.	2	
.3	-	Screw, M20 x 50 mm 8.8 A9K	8	
.4	-	Washer, 21 x 45 mm, 0.83 x 0.87 x 1.77 in. 300 HV	8	

Kits Slanted extension plate kit 2 x 150 mm (2 x 5.90 in.)

Item	Part Number	Name	Qty	L
1	4700382068	Slanted extension plate kit 2 x 150 mm (2 x 5.90 in.)	1	
.2	-	Extension plate, 150 mm, 5.90 in., Slanted 2.5°	2	
.3	-	Screw, M20 x 50 mm 8.8 A9K	8	
.4	-	Washer, 21 x 45 mm, 0.83 x 0.87 x 1.77 in. 300 HV	8	

Kits Hour meter kit

Item	Part Number	Name	Qty	L
1	4700376934	Hour meter kit	1	
.2	-	Hour meter	1	
.3	-	Screw, M3 x 10 mm 8.8 A2-70	2	
.4	-	Nut, M3 A2K	2	

Kits Safety crank handle kit

Item	Part Number	Name	Qty	L
1	4700283774	Safety crank handle kit	1	
.2	-	Safety crank	1	
.3	-	Crank holder	1	
.4	-	Screw	2	
.5	-	Nut	2	
.6	-	Washer	2	

Any unauthorized use or copying of the contents or any part thereof is prohibited.
This applies in particular to trademarks, model denominations, part numbers, and
drawings.

© 2014 Construction Tools EOOD | No. 9800 1112 01d | 2014-03-28

