

Parts List

8110.281

Senior



Table of Contents

1 Introduction.....	2
1.1 Specially approved products.....	2
2 Product Description.....	3
2.1 Products included.....	3
2.2 The data plate.....	3
3 Exploded View.....	4
3.1 8110.281.....	4
4 Spare Parts.....	5
4.1 8110.281.....	5

1 Introduction

Purpose of this manual

The purpose of this manual is to provide necessary information on spare parts and accessories order.

Disclaimer

Always use genuine Grindex parts. The use of other spare parts or accessories can invalidate any claims for warranty or compensation. Grindex does not take any responsibility for damages that are caused by the use of non-original parts. For more information, contact your local sales and service representative.

Data for ordering spare parts

The following information is needed for spare part orders:

- Serial number of the product
- Part number
- Quantity of bulk material, see * in tables

1.1 Specially approved products

Qualification of personnel

Only Grindex or Grindex-authorized service personnel may undertake repair work on Ex-approved products.

Dimensional accuracy inspection

Spare parts marked with (Ex) after the part number are subject to dimensional accuracy inspection when used in specially approved products.

2 Product Description

2.1 Products included

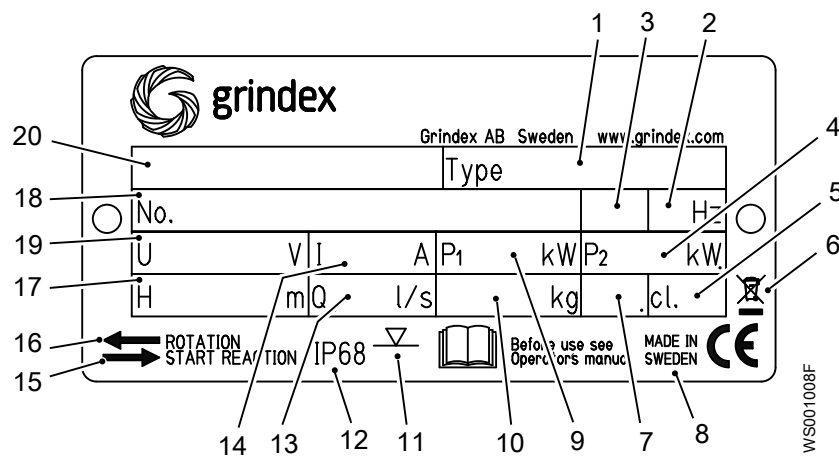
Pump model	Standard	EX	MSHA	Drainage	Sludge
Senior 8110.281	X				X

2.2 The data plate

Introduction

The data plate is a metal label located on the main body of the pump. The data plate lists key product specifications.

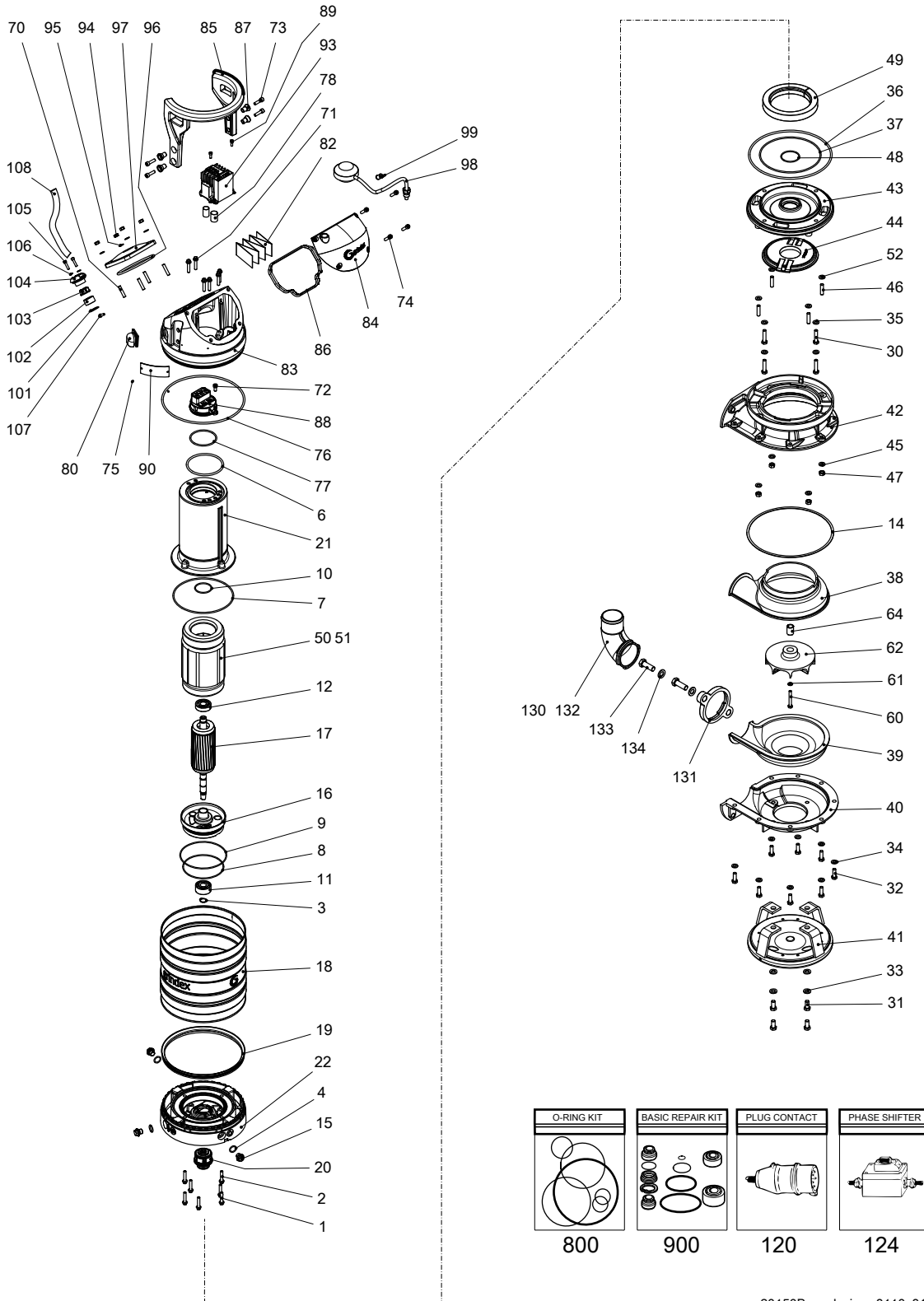
The data plate



1. Pump type number
 2. Frequency
 3. Phases, type of current
 4. Rated shaft power
 5. Thermal class
 6. WEEE-Directive symbol
 7. Locked rotor code-letter
 8. Country of origin
 9. Maximum power consumption
 10. Product weight
 11. Maximum submersion depth
 12. Degree of protection
 13. Maximum capacity
 14. Rated current
 15. Direction of the start reaction
 16. Direction of the impeller rotation
 17. Maximum head
 18. Serial number
- The first two characters describe the production year.
19. Rated voltage
 20. Pump model

3 Exploded View

3.1 8110.281



20150B_expl_view_8110_8111_281

4 Spare Parts

4.1 8110.281

Pos. No	Part. No	Type	Denomination	Qty/Version
				281
1	410 533		Hexagon flange screw M8X40-A2-70	4
2	410 533		Hexagon flange screw M8X40-A2-70	3
3	50 278 02		Retaining ring SGA 20	1
4	410 487		O-ring 19.2X3 FPM	3
6	410 882		O-ring 114.3X5.7 NBR	1
7	410 021		O-ring 192.0X4.0 NBR	1
8	410 018		O-ring 129.5X3 NBR	1
9	140 377		O-ring 144.5X3.0 NBR	1
10	410 023		O-ring 52.5X3.0 FPM	1
11	410 031		Ball bearing 20X52X22.2 MM	1
12	50 287 04		Ball bearing 20X52X15 MM	1
13	410 053		Oil ISO VG 32	*
14	131 544		Gasket	1
15	133 063		Inspection screw BRASS	3
16	50 950 00		Bearing housing	1
17	51 107 01		Shaft unit	1
18	50 858 00		Cooling jacket STAINLESS STEEL	1
19	50 987 00		Seal ring	1
20	51 760 51		Mechanical seal AL203/ WCCR,RSIC/RSIC FPM	1
20,1	410 082		Retaining ring	1
21	51 750 00		Stator housing	1
22	50 951 02		Adapter	1
23	50 136 00		Instruction label	1
30	410 072		Hexagon head screw M10X45-A2-70	4
31	131 553		Hexagon head screw M12X25-A2-70	4
32	410 004		Hexagon head screw M10X30-A2-70	8
33	132 274		Plain washer 13X24X2.5- A2-170HV	4

Pos. No	Part. No	Type	Denomination	Qty/Version
				281
34	50 022 26		Plain washer 10.5X20X2-A4-170HV	8
35	50 022 26		Plain washer 10.5X20X2-A4-170HV	4
36	132 415		O-ring 259.3X5.7 NBR	1
37	410 892		O-ring 192X4.0 FPM	1
38	50 153 00		Wear protection	1
39	50 154 00		Wear protection	1
40	50 155 00		Pump housing	1
41	131 551		Stand complete	1
42	131 559		Pump housing upper	1
43	51 097 00		Seal housing cov.coa	1
44	51 769 00		Guide plate	1
45	50 022 26		Plain washer 10.5X20X2-A4-170HV	4
46	410 170		Stud M10X28-A2-70	4
47	50 022 22		Hexagon nut M10-A4-70	4
48	50 037 42		O-ring 54.5X3 FPM	1
49	410 041		Pressure equalizer L=510 MM	1
50	51 108 07		Stator 15-14-4a 6-leads 3-phase 60 Hz 4-poles 200V-208V D	1
50	51 108 05		Stator 15-14-4a 6-leads 3-phase 50 Hz 4-poles 220V-240V D Stator 6-leads 3-phase 50 Hz 4-poles 380V-400V Y	1
50	51 108 06		Stator 15-14-4a 6-leads 3-phase 60 Hz 4-poles 220V-240V D	1
50	51 108 04		Stator 15-14-4a 9-leads 3-phase 60 Hz 4-poles 440V-480V YSER 9-leads 3-phase 60 Hz 4-poles 220V-240V Y//	1
50	51 108 11		Stator 15-14-4a 12-leads 3-phase 60 Hz 4-poles 380V-400V Y// 12-leads 3-phase 60 Hz 4-poles 440V-460V DSER 12-leads 3-phase 60 Hz 4-poles 220V-230V D//	1
50	51 108 01		Stator 15-14-4a 6-leads 3-phase 50 Hz 4-poles 380V-400V D 6-leads 3-phase 60 Hz 4-poles 440V-480V D 6-leads 3-phase 50 Hz 4-poles 660V-690V Y	1
50	51 108 03		Stator 15-14-4a 6-leads 3-phase 60 Hz 4-poles 380V-400V D	1

Pos. No	Part. No	Type	Denomination	Qty/Version	
				281	
50	51 108 02		Stator 15-14-4a	6-leads 3-phase 50 Hz 4-poles 415V-440V D	1
50	51 108 08		Stator 15-14-4a	6-leads 3-phase 50 Hz 4-poles 500V D 6-leads 3-phase 60 Hz 4-poles 575V-600V D	1
50	51 108 09		Stator 15-14-4a	6-leads 3-phase 50 Hz 4-poles 550V D 6-leads 3-phase 50 Hz 4-poles 1000V Y	1
51	410 034		Closed-end splice 3-6 (AWG 12-10)	9-leads 3-phase 60 Hz 4-poles 440V-480V YSER 12-leads 3-phase 60 Hz 4-poles 380V-400V Y// 9-leads 3-phase 60 Hz 4-poles 220V-240V Y//	1
51	410 034		Closed-end splice 3-6 (AWG 12-10)	9-leads 3-phase 60 Hz 4-poles 440V-480V YSER 12-leads 3-phase 60 Hz 4-poles 380V-400V Y// 9-leads 3-phase 60 Hz 4-poles 220V-240V Y//	2
51	410 034		Closed-end splice 3-6 (AWG 12-10)	9-leads 3-phase 60 Hz 4-poles 440V-480V YSER 12-leads 3-phase 60 Hz 4-poles 380V-400V Y// 9-leads 3-phase 60 Hz 4-poles 220V-240V Y//	3
52	130 896		Gasket		4
60	410 006		Hexagon head screw M8X60-A4-80		1
61	132 289		Plain washer 8.4X16X1.6-A2-140HV		1
62	50 864 00		Impeller	N 50Hz 3-phase Max ambient temp=40 DC	1
62	50 864 01		Impeller	N 60Hz 3-phase Max ambient temp=40 DC	1
64	51 751 00		Sleeve unit		1
70	50 021 13		Stud		4
71	410 533		Hexagon flange screw M8X40-A2-70		6
72	140 050		Hex.socket hd screw M8X30-A2-70		1
73	140 050		Hex.socket hd screw M8X30-A2-70		4
74	140 050		Hex.socket hd screw M8X30-A2-70		4
75	410 000		Drive screw 4X5-A2/A4		2

Pos. No	Part. No	Type	Denomination	Qty/Version
				281
76	132 415		O-ring 259.3X5.7 NBR	1
77	410 623		O-ring 78X4 NBR	1
78	410 770		Insulating hose D=18 MM	*
80	50 869 00		Air release valve	1
81	51 800 00		Sticker	1
82	51 673 00		Connection plate	1
83	51 753 00		Main cover	1
84	51 761 00		Cover	1
84	51 761 01		Cover Float switch	1
85	51 762 00		Handle	1
86	51 763 00		Gasket	1
87	51 765 00		Sleeve	4
88	51 764 00		Terminal plate unit	1
88	51 764 01		Terminal plate unit	1
89	410 889		Hex.socket hd screw M6X16-A2-70	2
90	50 888 00		Plate-blank	1
91	50 992 00		Sticker CUT HAZARD	1
93	51 767 18		Starter unit	1
			Contactor unit 50Hz 3-phase 220V - 240V Not CSA approved	
			Contactor unit 50Hz 3-phase 220V - 240V Float switch Not CSA approved	
93,1	51 768 00		Holder	1
93,4	51 511 07		Motor protector SMART	1
93,5	410 776		Contactor	1
93,6	50 018 00		Hex.socket hd screw M4X12-A4-70	2
93,7	410 012		Lock nut	2
93,8	50 018 00		Hex.socket hd screw M4X12-A4-70	2
93,9	410 012		Lock nut	2
93,12	51 713 02		Cable set	1
93,14	51 713 04		Cable set	1
93,16	51 713 06		Cable set	1
93,17	50 900 62		Single-core cable	1
93,18	50 509 00		Cable set	1

Pos. No	Part. No	Type	Denomination	Qty/Version
				281
93	51 767 19		Starter unit	1
			Contactor unit 50Hz 3-phase 415V - 440V Not CSA approved	
			Contactor unit 50Hz 3-phase 380V - 400V Float switch Not CSA approved	
			Contactor unit 50Hz 3-phase 380V - 400V Not CSA approved	
93,1	51 768 00		Holder	1
93,4	51 511 05		Motor protector SMART	1
93,5	410 812		Contactor	1
93,6	50 018 00		Hex.socket hd screw M4X12-A4-70	2
93,7	410 012		Lock nut	2
93,8	50 018 00		Hex.socket hd screw M4X12-A4-70	2
93,9	410 012		Lock nut	2
93,12	51 713 02		Cable set	1
93,14	51 713 04		Cable set	1
93,16	51 713 06		Cable set	1
93,17	50 900 62		Single-core cable	1
93,18	50 509 00		Cable set	1
93	51 767 20		Starter unit	1
			Contactor unit 50Hz 3-phase 500V - 500V Not CSA approved	
93,1	51 768 00		Holder	1
93,4	51 511 05		Motor protector SMART	1
93,5	410 812		Contactor	1
93,6	50 018 00		Hex.socket hd screw M4X12-A4-70	2
93,7	410 012		Lock nut	2
93,8	50 018 00		Hex.socket hd screw M4X12-A4-70	2
93,9	410 012		Lock nut	2
93,12	51 713 02		Cable set	1
93,14	51 713 04		Cable set	1
93,16	51 713 06		Cable set	1
93,17	50 900 62		Single-core cable	1
93,18	50 509 00		Cable set	1
93	51 767 25		Contactor unit	1
			Contactor unit 50Hz 3-phase 525V - 550V Not CSA approved	
93,1	51 768 00		Holder	1

Pos. No	Part. No	Type	Denomination	Qty/Version
				281
93,4	51 511 05		Motor protector SMART	1
93,5	410 891		Contactator	1
93,6	50 018 00		Hex.socket hd screw M4X12-A4-70	2
93,7	410 012		Lock nut	2
93,8	50 018 00		Hex.socket hd screw M4X12-A4-70	2
93,9	410 012		Lock nut	2
93,12	51 713 02		Cable set	1
93,14	51 713 04		Cable set	1
93,16	51 713 06		Cable set	1
93,17	50 900 62		Single-core cable	1
93,18	50 509 00		Cable set	1
93	51 767 33		Contactator unit Contactator unit Max 690V 50Hz 3-phase 660V - 690V Not CSA approved	1
93,1	51 768 00		Holder	1
93,4	51 511 09		Motor protector	1
93,5	411 056		Contactator	1
93,6	50 018 00		Hex.socket hd screw M4X12-A4-70	2
93,7	410 012		Lock nut	2
93,8	50 018 00		Hex.socket hd screw M4X12-A4-70	2
93,9	410 012		Lock nut	2
93,12	51 713 02		Cable set	1
93,17	50 900 71		Single-core cable	1
93,18	50 509 00		Cable set	1
93	51 767 29		Starter unit Contactator unit 60Hz 3- phase 200V - 208V CSA approved	1
93,1	51 768 00		Holder	1
93,4	51 511 08		Motor protector SMART	1
93,5	410 764		Contactator	1
93,6	50 018 00		Hex.socket hd screw M4X12-A4-70	2
93,7	410 012		Lock nut	2
93,8	50 018 00		Hex.socket hd screw M4X12-A4-70	2
93,9	410 012		Lock nut	2
93,12	51 713 02		Cable set	1
93,17	50 900 62		Single-core cable	1

Pos. No	Part. No	Type	Denomination	Qty/Version
				281
93,18	50 509 00		Cable set	1
93	51 767 26		Starter unit Contactor unit 60Hz 3-phase 220V - 240V CSA approved	1
93,1	51 768 00		Holder	1
93,4	51 511 08		Motor protector SMART	1
93,5	410 776		Contactor	1
93,6	50 018 00		Hex.socket hd screw M4X12-A4-70	2
93,7	410 012		Lock nut	2
93,8	50 018 00		Hex.socket hd screw M4X12-A4-70	2
93,9	410 012		Lock nut	2
93,12	51 713 02		Cable set	1
93,14	51 713 04		Cable set	1
93,16	51 713 06		Cable set	1
93,17	50 900 62		Single-core cable	1
93,18	50 509 00		Cable set	1
93	51 767 27		Starter unit Contactor unit 60Hz 3-phase 380V - 400V CSA approved Contactor unit 60Hz 3-phase 440V - 480V CSA approved Contactor unit 60Hz 3-phase 380V - 400V Not CSA approved Contactor unit 60Hz 3-phase 380V - 400V Float switch Not CSA approved	1
93,1	51 768 00		Holder	1
93,4	51 511 06		Motor protector SMART	1
93,5	410 812		Contactor	1
93,6	50 018 00		Hex.socket hd screw M4X12-A4-70	2
93,7	410 012		Lock nut	2
93,8	50 018 00		Hex.socket hd screw M4X12-A4-70	2
93,9	410 012		Lock nut	2
93,12	51 713 02		Cable set	1
93,14	51 713 04		Cable set	1
93,16	51 713 06		Cable set	1
93,17	50 900 62		Single-core cable	1
93,18	50 509 00		Cable set	1

Pos. No	Part. No	Type	Denomination	Qty/Version
				281
93	51 767 28		Starter unit	1
			Contactor unit 60Hz 3-phase 575V - 600V CSA approved	
93,1	51 768 00		Holder	1
93,4	51 511 06		Motor protector SMART	1
93,5	410 891		Contactor	1
93,6	50 018 00		Hex.socket hd screw M4X12-A4-70	2
93,7	410 012		Lock nut	2
93,8	50 018 00		Hex.socket hd screw M4X12-A4-70	2
93,9	410 012		Lock nut	2
93,12	51 713 02		Cable set	1
93,14	51 713 04		Cable set	1
93,16	51 713 06		Cable set	1
93,17	50 900 62		Single-core cable	1
93,18	50 509 00		Cable set	1
93	51 767 23		Starter unit	1
			Contactor unit 50Hz 3-phase 415V - 440V Float switch with isolated input Not CSA approved	
			Contactor unit 50Hz 3-phase 380V - 400V Float switch with isolated input Not CSA approved	
93,1	51 768 00		Holder	1
93,4	51 511 05		Motor protector SMART	1
93,5	410 812		Contactor	1
93,6	50 018 00		Hex.socket hd screw M4X12-A4-70	2
93,7	410 012		Lock nut	2
93,8	50 018 00		Hex.socket hd screw M4X12-A4-70	2
93,9	410 012		Lock nut	2
93,14	51 713 04		Cable set	1
93,16	51 713 06		Cable set	1
93,17	50 900 62		Single-core cable	1
93,18	50 509 00		Cable set	1
93,20	51 779 00		Supervision relay	1
93,21	50 457 00		Cable tie	1
93,22	410 034		Closed-end splice 3-6 (AWG 12-10)	1

Pos. No	Part. No	Type	Denomination	Qty/Version
				281
93	51 767 24		Starter unit	1
			Contactor unit 50Hz 3-phase 500V - 500V Float switch with isolated input Not CSA approved	
93,1	51 768 00		Holder	1
93,4	51 511 05		Motor protector SMART	1
93,5	410 812		Contactor	1
93,6	50 018 00		Hex.socket hd screw M4X12-A4-70	2
93,7	410 012		Lock nut	2
93,8	50 018 00		Hex.socket hd screw M4X12-A4-70	2
93,9	410 012		Lock nut	2
93,14	51 713 04		Cable set	1
93,16	51 713 06		Cable set	1
93,17	50 900 62		Single-core cable	1
93,18	50 509 00		Cable set	1
93,20	51 779 00		Supervision relay	1
93,21	50 457 00		Cable tie	1
93,22	410 034		Closed-end splice 3-6 (AWG 12-10)	1
93	51 767 22		Contactor unit	1
			Contactor unit 50Hz 3-phase 525V - 550V Float switch with isolated input Not CSA approved	
93,1	51 768 00		Holder	1
93,4	51 511 05		Motor protector SMART	1
93,5	410 891		Contactor	1
93,6	50 018 00		Hex.socket hd screw M4X12-A4-70	2
93,7	410 012		Lock nut	2
93,8	50 018 00		Hex.socket hd screw M4X12-A4-70	2
93,9	410 012		Lock nut	2
93,14	51 713 04		Cable set	1
93,16	51 713 06		Cable set	1
93,17	50 900 62		Single-core cable	1
93,18	50 509 00		Cable set	1
93,20	51 779 00		Supervision relay	1
93,21	50 457 00		Cable tie	1
93,22	410 034		Closed-end splice 3-6 (AWG 12-10)	1

Pos. No	Part. No	Type	Denomination	Qty/Version
				281
93	51 767 30		Starter unit	1
			Contactor unit 60Hz 3-phase 440V - 480V Float switch with isolated input CSA approved	
93,1	51 768 00		Holder	1
93,4	51 511 06		Motor protector SMART	1
93,5	410 812		Contactor	1
93,6	50 018 00		Hex.socket hd screw M4X12-A4-70	2
93,7	410 012		Lock nut	2
93,8	50 018 00		Hex.socket hd screw M4X12-A4-70	2
93,9	410 012		Lock nut	2
93,14	51 713 04		Cable set	1
93,16	51 713 06		Cable set	1
93,17	50 900 62		Single-core cable	1
93,18	50 509 00		Cable set	1
93,20	51 779 00		Supervision relay	1
93,21	50 457 00		Cable tie	1
93,22	410 034		Closed-end splice 3-6 (AWG 12-10)	1
93	51 767 31		Starter unit	1
			Contactor unit 60Hz 3-phase 575V - 600V Float switch with isolated input CSA approved	
93,1	51 768 00		Holder	1
93,4	51 511 06		Motor protector SMART	1
93,5	410 891		Contactor	1
93,6	50 018 00		Hex.socket hd screw M4X12-A4-70	2
93,7	410 012		Lock nut	2
93,8	50 018 00		Hex.socket hd screw M4X12-A4-70	2
93,9	410 012		Lock nut	2
93,14	51 713 04		Cable set	1
93,16	51 713 06		Cable set	1
93,17	50 900 62		Single-core cable	1
93,18	50 509 00		Cable set	1
93,20	51 779 00		Supervision relay	1
93,21	50 457 00		Cable tie	1
93,22	410 034		Closed-end splice 3-6 (AWG 12-10)	1
94	50 021 37		Hexagon nut M8-A4-70	4

Pos. No	Part. No	Type	Denomination	Qty/Version
				281
95	132 289		Plain washer 8.4X16X1.6-A2-140HV	4
96	410 890		O-ring 129.3X5.7 NBR	1
97	51 770 00		Cover	1
98	51 726 05		Level switch US/CDN	1
			Contactor unit 60Hz 3-phase 440V - 480V Float switch with isolated input CSA approved	
			Contactor unit 60Hz 3-phase 575V - 600V Float switch with isolated input CSA approved	
			Contactor unit 50Hz 3-phase 380V - 400V Float switch Not CSA approved	
			Contactor unit 60Hz 3-phase 380V - 400V Float switch Not CSA approved	
			Contactor unit 50Hz 3-phase 220V - 240V Float switch Not CSA approved	
98	51 726 03		Level regulator unit EU	1
			Contactor unit 50Hz 3-phase 525V - 550V Float switch with isolated input Not CSA approved	
			Contactor unit 50Hz 3-phase 415V - 440V Float switch with isolated input Not CSA approved	
			Contactor unit 50Hz 3-phase 380V - 400V Float switch with isolated input Not CSA approved	
			Contactor unit 50Hz 3-phase 500V - 500V Float switch with isolated input Not CSA approved	
99	410 077		Cable clamp STAINLESS STEEL, CR	1
101	50 127 04		Plain washer 24.5X35X2-A2-70	1
102	410 727		Seal sleeve (10)-12 MM NBR	1
			SUBCAB 4G1,5 10,50 - 11,50mm Max 750V	
102	410 729		Seal sleeve (14)-16 MM NBR	1
			SUBCAB 14AWG/4 14,20 - 15,20mm Max 600V	
			SUBCAB 4G1,5+2x1,5 16 - 17mm Max 750V	
102	410 728		Seal sleeve (12)-14 MM NBR	1
			Screened 3x2,5 13,50 - 14,90mm Max 1000V	
			SUBCAB 4G2,5 12,50 - 13,50mm Max 750V	

Pos. No	Part. No	Type	Denomination	Qty/Version
				281
102	410 730		Seal sleeve (16)-18 MM NBR SUBCAB 4G2,5+2x1,5 17 - 18mm Max 750V SUBCAB 12AWG/4 17 - 18mm Max 600V	1
102	410 731		Seal sleeve (18)-20 MM NBR SUBCAB S3x2,5+3x2,5/3+S(4x0,5) 18 - 20mm Max 1000V SUBCAB 14AWG/7 18 - 20mm Max 600V	1
102	410 732		Seal sleeve (20)-22 MM NBR SUBCAB 12AWG/7 20 - 22mm Max 600V SUBCAB 10AWG/3-2-1-GC 20,30 - 22,30mm Max 600V	1
102	410 733		Seal sleeve (22)-24 MM NBR SUBCAB 10AWG/3-2-1-GC 20,30 - 22,30mm Max 600V	1
103	50 926 00	(Ex)	Cable clip 10-(12) MM SUBCAB 4G1,5 10,50 - 11,50mm Max 750V	1
103	50 926 02	(Ex)	Cable clip 14-(16) MM SUBCAB 14AWG/4 14,20 - 15,20mm Max 600V SUBCAB 4G1,5+2x1,5 16 - 17mm Max 750V	1
103	50 926 01	(Ex)	Cable clip 12-(14) MM Screened 3x2,5 13,50 - 14,90mm Max 1000V SUBCAB 4G2,5 12,50 - 13,50mm Max 750V	1
103	50 926 03	(Ex)	Cable clip 16-(18) MM SUBCAB 4G2,5+2x1,5 17 - 18mm Max 750V SUBCAB 12AWG/4 17 - 18mm Max 600V	1
103	50 926 04	(Ex)	Cable clip 18-(20) MM SUBCAB S3x2,5+3x2,5/3+S(4x0,5) 18 - 20mm Max 1000V SUBCAB 14AWG/7 18 - 20mm Max 600V	1
103	50 926 05	(Ex)	Cable clip 20-(22) MM SUBCAB 12AWG/7 20 - 22mm Max 600V SUBCAB 10AWG/3-2-1-GC 20,30 - 22,30mm Max 600V	1
104	50 932 00		Entrance flange (10)-20 MM	1
105	410 534		Hex.socket hd screw M6X25-A2-70	2
106	410 013		Plain washer 6.4X12X1.6-A4-170HV	2

Pos. No	Part. No	Type	Denomination	Qty/Version
				281
107	410 889		Hex.socket hd screw M6X16-A2-70	1
107	410 889		Hex.socket hd screw M6X16-A2-70	2
108	51 714 05		Motor cable unit SUBCAB 4G1,5 10,50 - 11,50mm L= 20m Max 750V	1
108	51 714 10		Motor cable unit SUBCAB 4G1,5+2x1,5 16 - 17mm L= 20m Max 750V	1
108	51 714 06		Motor cable unit SUBCAB 4G2,5 12,50 - 13,50mm L= 20m Max 750V	1
108	51 714 11		Motor cable unit SUBCAB 4G2,5+2x1,5 17 - 18mm L= 20m Max 750V	1
108	51 714 07		Motor cable unit SUBCAB 14AWG/4 14,20 - 15,20mm L= 16m Max 600V	1
108	51 714 15		Motor cable unit SUBCAB 14AWG/7 18 - 20mm L= 16m Max 600V	1
108	51 714 08		Motor cable unit SUBCAB 12AWG/4 17 - 18mm L= 16m Max 600V	1
108	51 714 16		Motor cable unit SUBCAB 12AWG/7 20 - 22mm L= 16m Max 600V	1
108	51 714 17		Motor cable unit SUBCAB 10AWG/3-2-1- GC 20,30 - 22,30mm L= 16m Max 600V	1
108	51 714 21		Motor cable unit Screened 3x2,5 13,50 - 14,90mm L= 20m Max 1000V	1
108	51 714 19		Motor cable unit SUBCAB S3x2,5+3x2,5/3+S(4x0, 5) 18 - 20mm L= 20m Max 1000V	1
108	-		Motor cable unit	1
120	50 100 00		Plug contact 3-phase 50 Hz 380V - 415V Current range: 0 - 16A Plug combined with short cable: No cable Supply connection: CEE 5-PLUG 16A Starter (Phase shifter) 3- phase 50/60 Hz 380V - 415V Current range: 0 - 16A Plug combined with short cable: SUBCAB 4G2,5 Supply connection: CEE 5-PLUG 16A	1

Pos. No	Part. No	Type	Denomination	Qty/Version	
				281	
120	50 100 01		Plug contact	3-phase 50 Hz 380V - 415V Current range: 0 - 32A Plug combined with short cable: No cable Supply connection: CEE 5-PLUG 32A	1
120	410 684		Plug contact	3-phase 50 Hz 380V - 415V Current range: 0 - 16A Plug combined with short cable: No cable Supply connection: CEE 4-PLUG 16A	1
121	51 735 01		Sticker		1
122	51 735 01		Sticker		1
123	131 039		Motor cable subcab 4G2.5	Starter (Phase shifter) 3-phase 50/60 Hz 220V - 575V Current range: 0 - 16A Plug combined with short cable: SUBCAB 4G2,5 Starter (Phase shifter) 3-phase 50/60 Hz 380V - 415V Current range: 0 - 16A Plug combined with short cable: SUBCAB 4G2,5 Supply connection: CEE 5-PLUG 16A	*
123	410 065		Motor cable subcab 14 AWG/4	Starter (Phase shifter) 3-phase 50/60 Hz 220V - 575V Current range: 0 - 16A Plug combined with short cable: SUBCAB 14AWG/4	*
123	133 139		Motor cable subcab 4G4	Starter (Phase shifter) 3-phase 50/60 Hz 220V - 575V Current range: 0 - 22A Plug combined with short cable: SUBCAB 4G4	*
123	410 067		Motor cable subcab 12 AWG/4	Starter (Phase shifter) 3-phase 50/60 Hz 220V - 575V Current range: 0 - 22A Plug combined with short cable: SUBCAB 12AWG/4	*
124	50 102 00		Phase shifter	Current range: 0 - 16A	1
124	50 102 01		Phase shifter	Current range: 0 - 22A	1
125	51 735 01		Sticker		1
130	131 787		Discharge connection DN 75	DN 75 Hose 3" aluminium	1

Pos. No	Part. No	Type	Denomination	Qty/Version
				281
130	132 048		Discharge connection R 3" DN 75 Thread : ISO G3A Outer aluminium DN 75 Thread : ISO G3A Outer Quick coupling: Storz aluminium	1
130	132 049		Discharge connection 3-8 NPSM DN 75 Thread : NPSM 3-8 Outer aluminium	1
130	131 622		Discharge connection 4" DN 100 Hose 4" aluminium	1
130	131 623		Discharge connection R 4" DN 100 Thread : ISO G4A Outer Quick coupling: Storz diam=115 mm aluminium DN 100 Thread : ISO G4A Outer Quick coupling: Storz aluminium DN 100 Thread : ISO G4A Outer aluminium	1
130	131 624		Discharge connection 4-8 NPSM DN 100 Thread : NPSM 4-8 Outer aluminium	1
130	50 198 01		Discharge connection DN 75 DN 75 Hose 3" Grey cast iron	1
130	50 198 02		Discharge connection R 3" DN 75 Thread : ISO G3A Outer Grey cast iron	1
130	50 198 00		Discharge connection 3-8 NPT DN 75 Thread : NPT 3-8 Outer Grey cast iron	1
130	50 199 01		Discharge connection 4" DN 100 Hose 4" Grey cast iron	1
130	50 199 02		Discharge connection R 4" DN 100 Thread : ISO G4A Outer Grey cast iron	1
130	50 199 00		Discharge connection 4-8 NPT DN 100 Thread : NPT 4-8 Outer Grey cast iron	1
131	50 727 00		Connection flange	1
132	410 028		Coupling part Discharge Connection DN 75 Thread : ISO G3A Outer Quick coupling: Storz aluminium	1
132	410 030		Coupling part STORTZ ISO G4 Discharge Connection DN 100 Thread : ISO G4A Outer Quick coupling: Storz aluminium	1
132	410 029		Coupling part Discharge Connection DN 100 Thread : ISO G4A Outer Quick coupling: Storz diam=115 mm aluminium	1
133	410 543		Hexagon head screw M16X45-A2-70	2

Pos. No	Part. No	Type	Denomination	Qty/Version
				281
134	132 258		Plain washer 17X30X3-A2-170HV	2
800	51 777 00		O-ring kit NBR	1
801	51 096 00		Anode unit	1
900	51 786 00		Basic repair kit	1
900,1	410 031		Ball bearing 20X52X22.2 MM	1
900,1	410 082		Retaining ring	1
900,2	50 287 04		Ball bearing 20X52X15 MM	1
900,3	410 041		Pressure equalizer L=510 MM	1
900,4	410 487		O-ring 19.2X3 FPM	3
900,4	51 760 51		Mechanical seal AL203/WCCR,RSIC/RSIC FPM	1
900,5	51 777 00		O-ring kit	1
900,6	410 882		O-ring 114.3X5.7 NBR	1
900,6	51 829 00		Sticker	1



www.grindex.com

Grindex
Gesällvägen 33
174 07 Sundbyberg
Sweden
Tel: +46-8-606 66 00
Fax: +46-8-745 53 28
www.grindex.com

Visit our Web site for the latest version of this document
and more information

The original instruction is in English. All non-English
instructions are translations of the original instruction.

© 2012 Grindex