

S10000 400V 50Hz #AVR #CONN #DPP



Main Features

| | | |
|--------------|------------|---------|
| Frequency | Hz | 50 |
| Voltage | V | 400/230 |
| Power factor | cos ϕ | 0.8 |
| Phase | | 3 |



Power Rating

| | | |
|-----------------------------|-----|------|
| Emergency Standby Power ESP | kVA | 11.8 |
| Emergency Standby Power ESP | kW | 9.4 |
| Continuous power COP | kVA | 10.5 |
| Continuous power COP | kW | 8.4 |

Single Phase Power Rating

| | | |
|-----------------------------------|-----|------|
| Single phase Maximum Power | kVA | 4.16 |
| Single phase continuous power COP | kVA | 3.83 |

Ratings definition (According to standard ISO8528 1:2005)

Engine specifications

| | | |
|-------------------------|-----------------|------|
| Engine Brand | Lombardini | |
| Model | 25LD425 | |
| Engine cooling system | Air | |
| Displacement | cm ³ | 851 |
| Aspiration | Natural | |
| Operating Speed-Nominal | rpm | 3000 |
| Speed governor | Mechanical | |
| Fuel | Diesel | |
| Oil capacity | l | 1.8 |
| Starting system | Electric | |
| Electric circuit | V | 12 |

Alternator Specifications

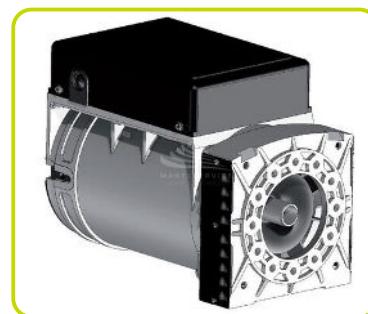
| | | |
|---------------------------|------------|-----|
| Type | Brushes | |
| Class | H | |
| IP protection | 23 | |
| Poles | 2 | |
| Frequency | Hz | 50 |
| Voltage | V | 400 |
| Voltage regulation system | Electronic | |
| Standard AVR | ASR | |

Dimensional data

| | | |
|--------------------|--------|-----|
| Length | (L) mm | 960 |
| Width | (W) mm | 641 |
| Height | (H) mm | 667 |
| Dry weight | kg | 160 |
| Fuel tank capacity | l | 24 |

Autonomy

| | | |
|----------------------------------|-----|------|
| Fuel consumption at 75% of Load | l/h | 2.44 |
| Fuel consumption at 100% of Load | l/h | 3.25 |
| Running time at 75% of load | h | 9.84 |
| Running time at 100% of load | h | 7.38 |



GENSET CONTROL PANELS (CONN DPP)

Mounted on the genset and complete of: instrumentation, control, protection of the generating set and sockets.



COMMANDS

- Start selector switch with key: OFF - ON - START
- **CONN**ector for AMF/RSS (Accessory available)

INSTRUMENTATION

- Voltmeter

PROTECTIONS

- Circuit breaker
- Differential protection (**DPP**)
- Oil Guard

SOCKET TYPE

| | |
|--------------------------|---|
| SCHUKO 230V 16A IP54 | 1 |
| 2P+T CEE 230V 16A IP67 | 1 |
| 3P+N+T CEE 400V 16A IP44 | 1 |

ACCESSORIES CONTROL PANEL

AMF - AUTOMATIC CONTROL PANEL (CONN)

This accessory permits to control all the functions about a generator. It's built to monitor mono phase or three phase with neutral systems in alternate current; it permits to transfer the user's load on generator when the mains voltage is faulty. Conversely, as soon as AMF system detects the power grid, it stops the generator.

Equipment:

- Control and protection unit (DGT)
- Phase detector
- Contactor with interblock
- Battery charged
- Acoustic alarm
- 8 meters control wiring (with CONNector)
- External start stop capability
- Emergency stop button

Instrumentation (DGT):

- Mains voltage
- Genset voltage
- Frequency meter
- Hour meter

Alarm & Shutdowns:

- Generators voltage out of limits
- Battery Voltage out of limits
- Low oil Pressure
- Fail to start
- External shutdown

RSS - REMOTE START / STOP (CONN)

RSS Remote start/stop wireless with CONNector (max Distance 90m)



ACCESSORIES

TRANSPORTATION KIT

- With fix handles



- With folding handles

